

tekmar® Quick Setup Guide

tekmarNet®4 Thermostat 538



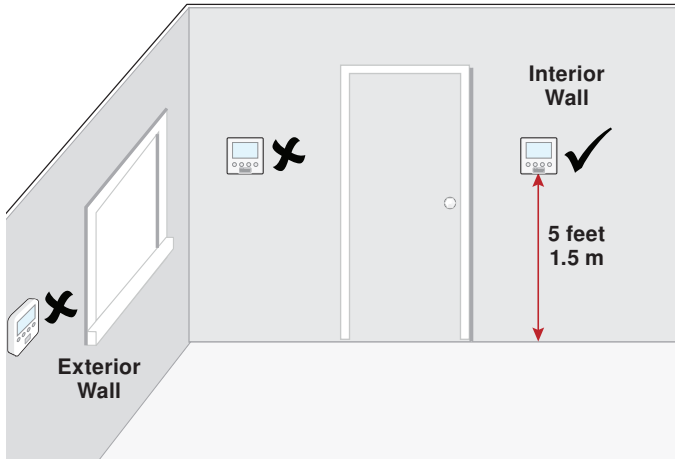
Zoning

Q 538

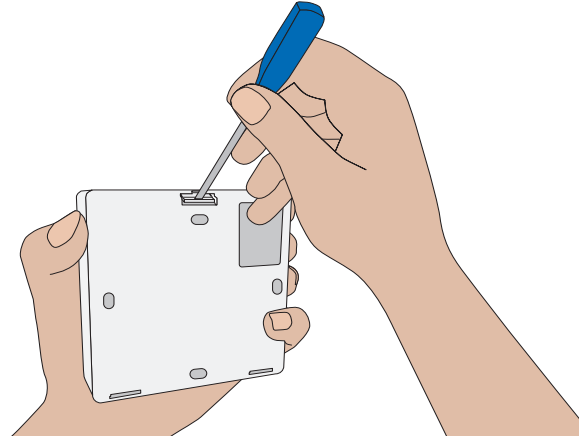
08/10

Replaces: New

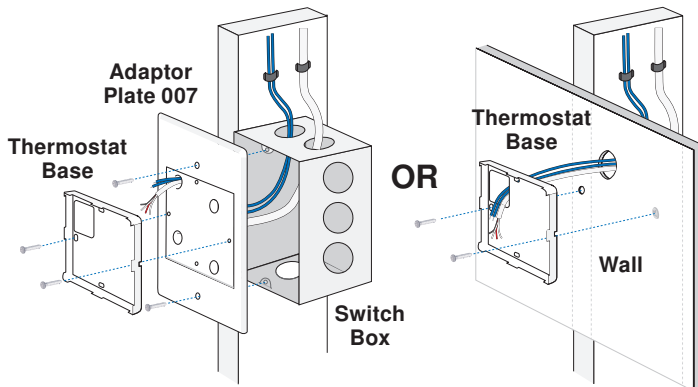
1. Location



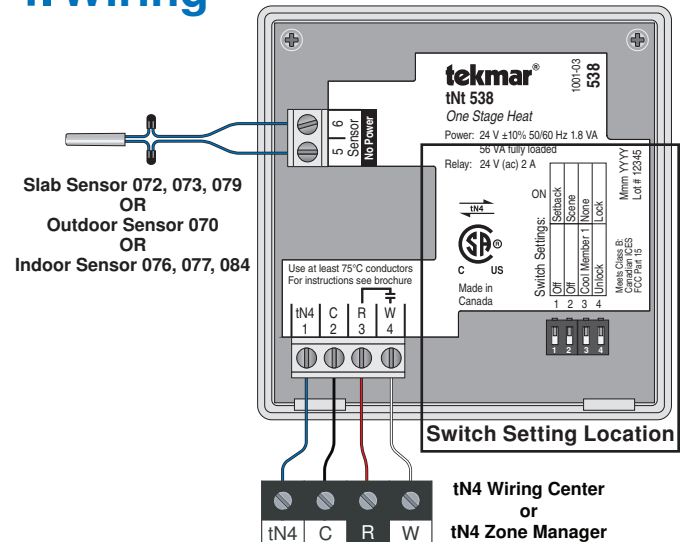
2. Remove Mounting Base



3. Install Mounting Base



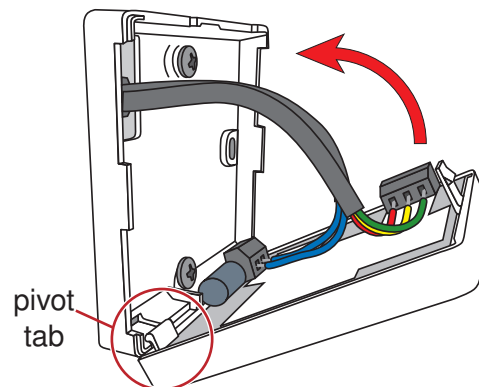
4. Wiring



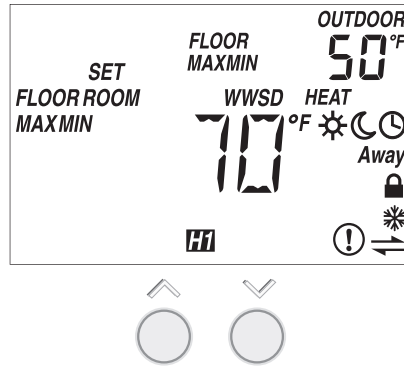
5. Switch Settings

Switch	Position	Action
1	ON	SETBACK Allow thermostat to respond to available schedule. Requires Timer 033.
	OFF	OFF No setback schedule response.
2	ON	SCENE Allow thermostat to respond to scenes. Requires User Switch 479.
	OFF	OFF No scene response.
3	ON	NONE The thermostat is not part of a cooling group.
	OFF	COOL MEMBER 1 The thermostat is a member of cooling group number 1.
4	ON	LOCK Locked to 'User' access level. Set to Lock when installation completed.
	OFF	UNLOCK Unlock to access all settings. Set to Unlock during installation.

6. Close Thermostat



7. User Interface




8. Critical Settings

The following settings are essential to the successful operation of the system.

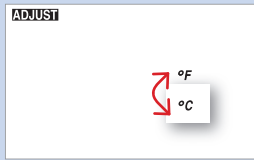
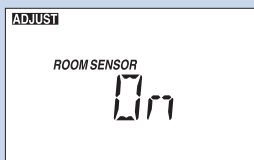
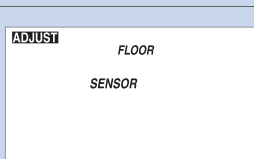
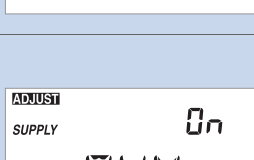
Important Note: Set switch setting #4 and tekmarNet® system control to Unlock to change Access level to Installer. Return to Lock setting once installation has been completed.

Press



Together

- Press and hold down both the **^** and **v** buttons for 2 seconds to change from one step to the next.
- Release both buttons once the step has been reached.
- Press the **^** or the **v** button to change the setting, if available.
- Press and hold down both the **^** and **v** buttons for 2 seconds to go to the next step, OR
- After 10 seconds of no button activity, the display goes back to normal operation.

Display	Range	Access	Description	Set to
	°F or °C Default = °F	Installer User	TEMPERATURE UNITS Press the ^ or the v button to change from °F to °C and vice versa.	
	On or Off Default = On	Installer	ROOM SENSOR Select whether the built-in air temperature sensor is on or off. Available when: A floor sensor or room sensor is installed on the auxiliary sensor input.	
	Off, Room, Outdoor, Floor, Floor dSP	Installer	AUXILIARY SENSOR Select the type of auxiliary sensor. Floor dSP = Show floor sensor reading in upper number field. Available when: Auxiliary sensor automatically detected.	
	OFF, dLy (delay), On Default = On	Installer	HEATING SUPPLY PUMP Select how the system supply pump should operate: On = system pump on during a call for heat. Delay = system pump delayed 3 minutes for thermal motor (wax actuator) zone valves to open. Off = system pump not turned on during a call for heat. Use when a manifold uses a Zone Group Pump. Available when: • A reset control is present on the tekmarNet® system.	

For a full list of settings and operational details, please refer to the thermostat **Installation and Operation Manual (D538)** included with compatible tekmarNet® controls or download the brochure from www.tekmarcontrols.com