



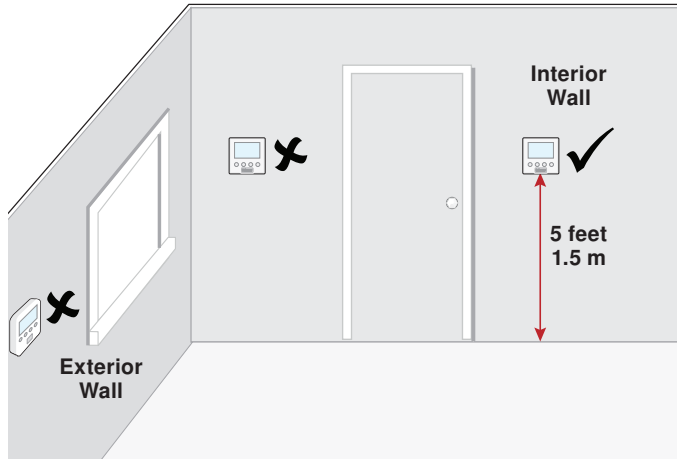
Zoning

Q 530

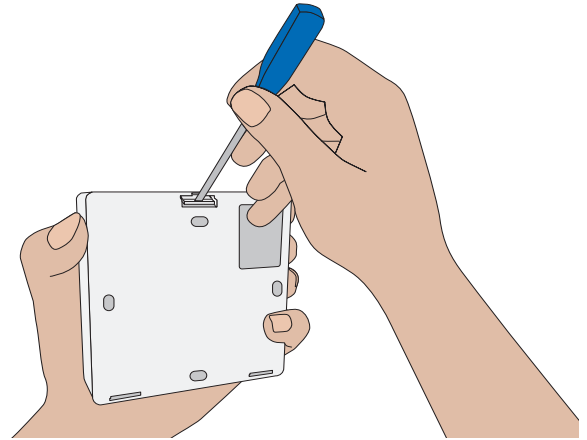
08/10

Replaces: 10/09

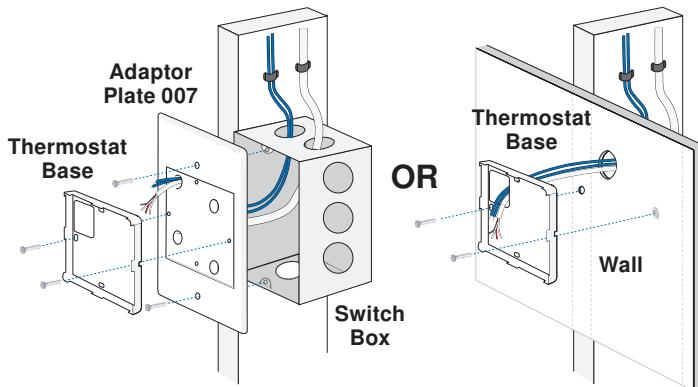
1. Location



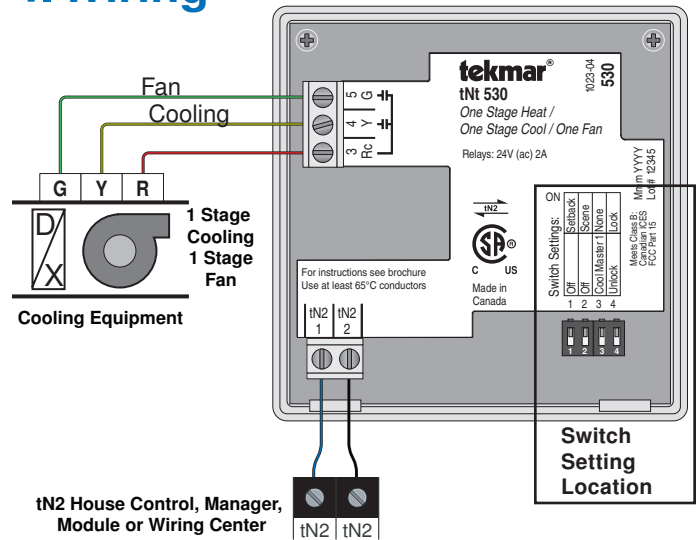
2. Remove Mounting Base



3. Install Mounting Base



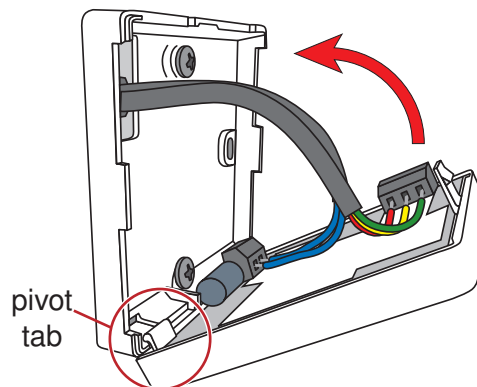
4. Wiring



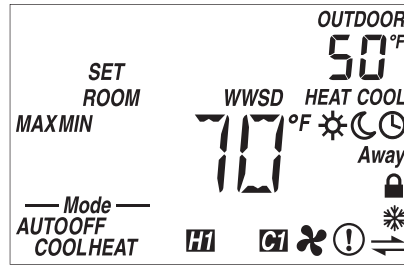
5. Switch Settings

Switch	Position	Action
1	ON	SETBACK Allow thermostat to respond to available schedule. Requires Timer 033.
	OFF	OFF No setback schedule response.
2	ON	SCENE Allow thermostat to respond to scenes. Requires User Switch 479.
	OFF	OFF No scene response.
3	ON	NONE The thermostat is not part of a cooling group.
	OFF	COOL MASTER 1 The thermostat is a master of cooling group number 1.
4	ON	LOCK Locked to 'User' access level. Set to Lock when installation completed.
	OFF	UNLOCK Unlocked to access all settings. Set to Unlock during installation.

6. Close Thermostat



7. User Interface



Mode button Mode **Fan button** Fan Switch between Auto or On
Auto, Heat, Cool, Off

8. Critical Settings

The following settings are essential to the successful operation of the system.

Important Note: Set switch setting #4 and tekmarNet® system control to Unlock to change Access level to Installer. Return to Lock setting once installation has been completed.

Press

Together

- Press and hold down both the and buttons for 2 seconds to change from one step to the next.
- Release both buttons once the step has been reached.
- Press the or the button to change the setting, if available.
- Press and hold down both the and buttons for 2 seconds to go to the next step, OR
- After 10 seconds of no button activity, the display goes back to normal operation.

Display	Range	Access	Description	Set to
	°F or °C Default = °F	Installer User	TEMPERATURE UNITS Press the or the button to change from °F to °C and vice versa.	
	0, 1, 2, 3 Default = 1	Installer	FAN MODE Select how the fan should operate together with heating and cooling. 0 = Manual operation only 1 = Operate fan with cooling only 2 = Operate fan with heating and cooling 3 = Operate fan with heating only	
	Hyd (Hydronic) or Oth (Other) Default = Hydronic	Installer	HEATING TERMINAL TYPE Select if the heating for this zone is hydronic or non-hydronic (other). Available when: <ul style="list-style-type: none"> A reset control is present on the tekmarNet® system. 	
	OFF, dLy (delay), On Default = On	Installer	HEATING SUPPLY PUMP Select how the system supply pump should operate: On = system pump on during a call for heat. Delay = system pump delayed 3 minutes for thermal motor (wax actuator) zone valves to open. Off = system pump not turned on during a call for heat. Use when a manifold uses a Zone Group Pump. Available when: <ul style="list-style-type: none"> A reset control is present on the tekmarNet® system AND Heating terminal type is set to Hydronic. 	

For a full list of settings and operational details, please refer to the thermostat **Installation and Operation Manual (D530)** included with compatible tekmarNet® controls or download the brochure from www.tekmarcontrols.com

tekmar Control Systems Ltd., Canada, tekmar Control Systems, Inc., U.S.A. **Head Office: 5100 Silver Star Road, Vernon, B.C. Canada V1B 3K4, 250-545-7749, Fax. 250-545-0650 Web Site: www.tekmarcontrols.com**