

# tekmar® Quick Setup Guide

## tekmarNet®2 Thermostat 528



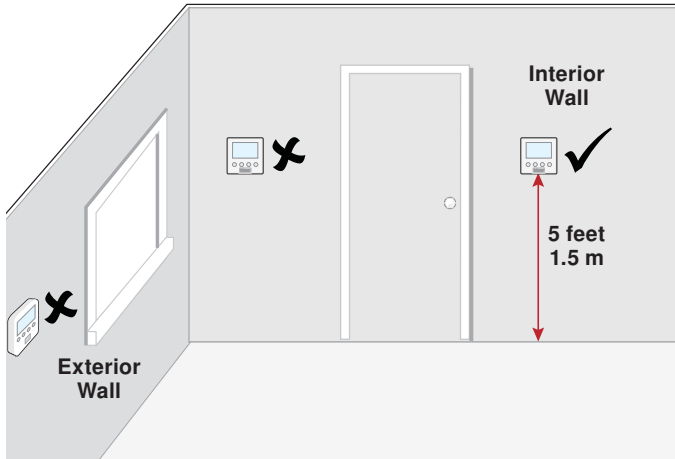
Zoning

Q 528

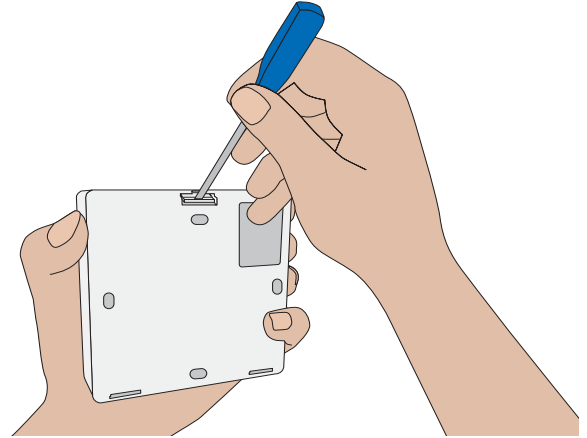
12/11

Replaces: 08/10

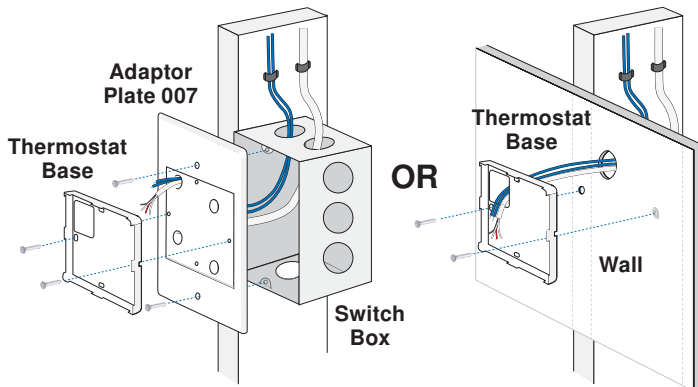
### 1. Location



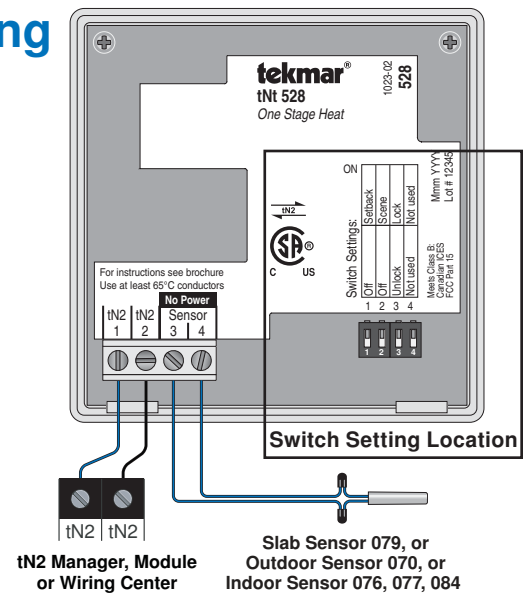
### 2. Remove Mounting Base



### 3. Install Mounting Base



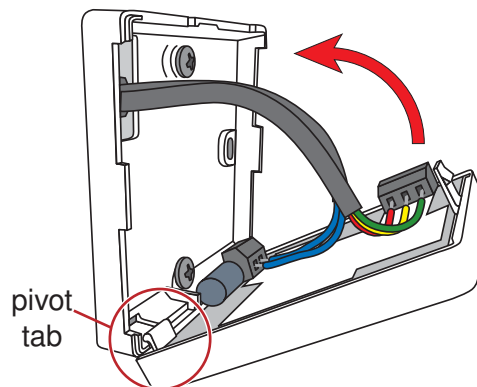
### 4. Wiring



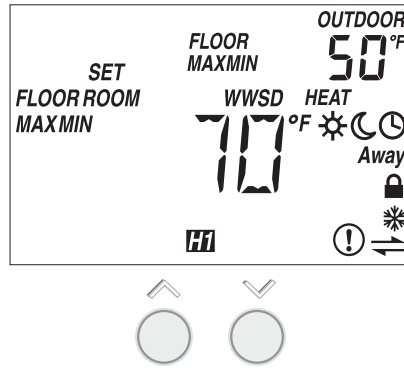
### 5. Switch Settings

Switch	Position	Action
1	ON	<b>SETBACK</b> Allow thermostat to respond to available schedule. Requires Timer 033.
	OFF	<b>OFF</b> No setback schedule response.
2	ON	<b>SCENE</b> Allow thermostat to respond to scenes. Requires User Switch 479.
	OFF	<b>OFF</b> No scene response.
3	ON	<b>LOCK</b> Locked to 'User' access level. Set to Lock when installation completed.
	OFF	<b>UNLOCK</b> Unlock to access all settings. Set to Unlock during installation.
4	ON	Not used
	OFF	Not used

### 6. Close Thermostat



# 7. User Interface



# 8. Critical Settings

The following settings are essential to the successful operation of the system.

**Important Note:** Set switch setting #3 and tekmarNet® system control to Unlock to change Access level to Installer. Return to Lock setting once installation has been completed.

Press  
 +   
 Together

- Press and hold down both the and buttons for 2 seconds to change from one step to the next.
- Release both buttons once the step has been reached.
- Press the or the button to change the setting, if available.
- Press and hold down both the and buttons for 2 seconds to go to the next step, OR
- After 10 seconds of no button activity, the display goes back to normal operation.

Display	Range	Access	Description	Set to
	°F or °C Default = °F	Installer User	<b>TEMPERATURE UNITS</b> Press the  or the  button to change from °F to °C and vice versa.	
	OFF or On Default = On	Installer	<b>HEAT SUPPLY PUMP</b> During heating, select whether or not the system supply pump should turn on or be off to allow a zone group pump per manifold. Available when: <ul style="list-style-type: none"> <li>A reset control is present on the tekmarNet® system.</li> </ul>	
	OFF or On Default = OFF	Installer	<b>HEAT SUPPLY PUMP DELAY</b> During heating, select whether or not the system supply pump should be delayed by 3 minutes before coming on (for thermal motor or wax actuator). Available when: <ul style="list-style-type: none"> <li>A reset control is present on the tekmarNet® system.</li> </ul>	
	On or Off Default = On	Installer	<b>ROOM SENSOR</b> Select whether the built-in air temperature sensor is on or off. Available when: A floor sensor or room sensor is installed on the auxiliary sensor input.	
	Off, Room, Outdoor, Floor, Floor dSP	Installer	<b>AUXILIARY SENSOR</b> Select the type of auxiliary sensor. Floor dSP = Show floor sensor reading in upper number field. Available when: Auxiliary sensor automatically detected.	

For a full list of settings and operational details, please refer to the thermostat **Installation and Operation Manual (D528)** included with compatible tekmarNet® controls or download the brochure from [www.tekmarcontrols.com](http://www.tekmarcontrols.com)

tekmar Control Systems Ltd., Canada, tekmar Control Systems, Inc., U.S.A. **Head Office: 5100 Silver Star Road, Vernon, B.C. Canada V1B 3K4, 250-545-7749, Fax. 250-545-0650 Web Site: [www.tekmarcontrols.com](http://www.tekmarcontrols.com)**

Product design, software and literature are Copyright © 2011 by: tekmar Control Systems Ltd. and tekmar Control Systems, Inc.

2 of 2

All specifications are subject to change without notice. Printed in Canada. Q528 - 12/11.