



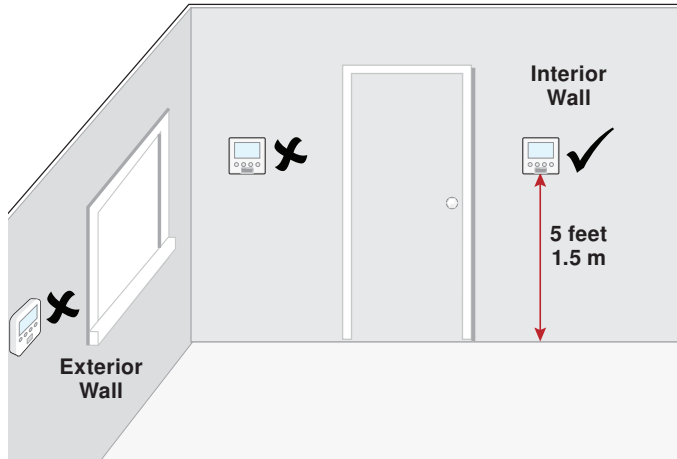
Zoning

Q 528

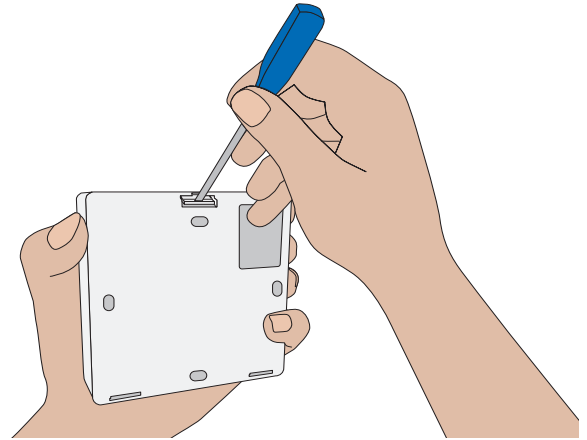
08/10

Replaces: 10/09

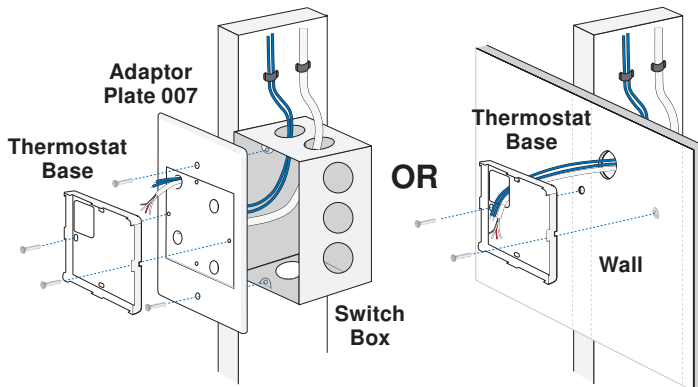
1. Location



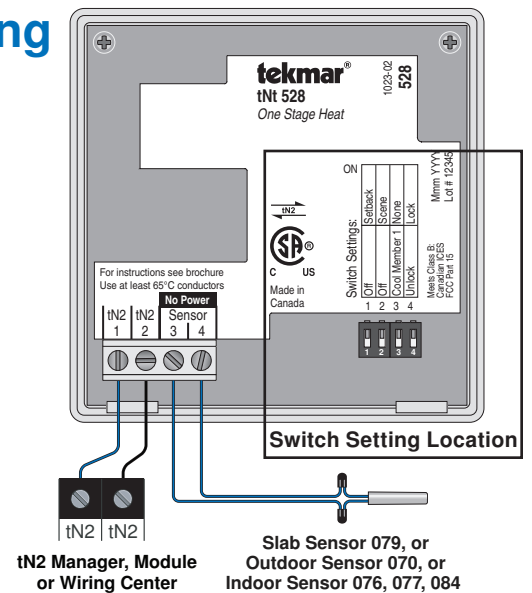
2. Remove Mounting Base



3. Install Mounting Base



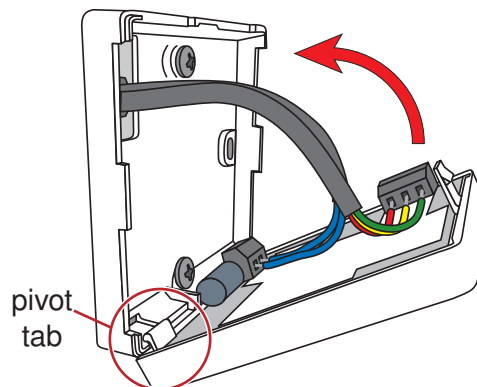
4. Wiring



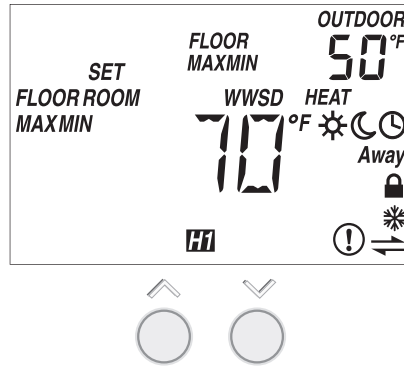
5. Switch Settings

| Switch | Position | Action |
|--------|----------|---|
| 1 | ON | SETBACK Allow thermostat to respond to available schedule. Requires Timer 033. |
| | OFF | OFF No setback schedule response. |
| 2 | ON | SCENE Allow thermostat to respond to scenes. Requires User Switch 479. |
| | OFF | OFF No scene response. |
| 3 | ON | NONE The thermostat is not part of a cooling group. |
| | OFF | COOL MEMBER 1 The thermostat is a member of cooling group number 1. |
| 4 | ON | LOCK Locked to 'User' access level. Set to Lock when installation completed. |
| | OFF | UNLOCK Unlocked to access all settings. Set to Unlock during installation. |

6. Close Thermostat



7. User Interface



8. Critical Settings

The following settings are essential to the successful operation of the system.

Important Note: Set switch setting #4 and tekmarNet® system control to Unlock to change Access level to Installer. Return to Lock setting once installation has been completed.

Press

Together

- Press and hold down both the and buttons for 2 seconds to change from one step to the next.
- Release both buttons once the step has been reached.
- Press the or the button to change the setting, if available.
- Press and hold down both the and buttons for 2 seconds to go to the next step, OR
- After 10 seconds of no button activity, the display goes back to normal operation.

| Display | Range | Access | Description | Set to |
|---------|---|-------------------|--|--------|
| | °F or °C Default = °F | Installer User | TEMPERATURE UNITS Press the or the button to change from °F to °C and vice versa. | |
| | On or Off Default = On | Installer | ROOM SENSOR Select whether the built-in air temperature sensor is on or off. Available when: A floor sensor or room sensor is installed on the auxiliary sensor input. | |
| | Off, Room, Outdoor, Floor, Floor dSP | Installer | AUXILIARY SENSOR Select the type of auxiliary sensor. Floor dSP = Show floor sensor reading in upper number field. Available when: Auxiliary sensor automatically detected. | |
| | OFF, dLy (delay), On Default = On | Installer | HEATING SUPPLY PUMP Select how the system supply pump should operate: On = system pump on during a call for heat. Delay = system pump delayed 3 minutes for thermal motor (wax actuator) zone valves to open. Off = system pump not turned on during a call for heat. Use when a manifold uses a Zone Group Pump. Available when: • A reset control is present on the tekmarNet® system. | |

For a full list of settings and operational details, please refer to the thermostat **Installation and Operation Manual (D528)** included with compatible tekmarNet® controls or download the brochure from www.tekmarcontrols.com