

Job Name _____

Contractor _____

Job Location _____

Approval _____

Engineer _____

Contractor's P.O. No. _____

Approval _____

Representative _____

LEAD FREE*

Series RPVM1-Press

Residential Purge, Drain and Balancing Valves

Sizes: 1/2" – 2"

Series RPVM1-Press Residential Purge and Drain Valves provide a unique and low cost solution for start-up purging and draining of hydronic heating loops. Using a rugged, dual-ball valve design, the small and compact RPVM1-Press facilitates high volume purging, tight shutoff and hose connection for draining and purging.

Features

- Integral purge port saves time and money compared to purge stations made with a ball valve, boiler drain, and copper tee
- Ball valve purge port – purge port has a 3/4" hose thread with cap
- Positive shutoff dual-ball valve design – port maximizes purging
- Cast purge port handle

Specifications

A purge, drain and balancing valve shall be installed where indicated on the plans. The valve shall facilitate high volume purging, accurate balancing, tight shutoff and hose connection for draining and purging. The valve shall feature a dual-ball valve design. The valve shall be a Watts Series RPVM1-Press.

Materials

Body: Brass

Ball: Plated brass

Seats: Virgin PTFE

Pressure – Temperature

Maximum Inlet Temperature: 250°F (121°C)

Maximum Working Pressure: 250 psi (17 bar)



RPVM1-Press



NOTICE

The information contained herein is not intended to replace the full product installation and safety information available or the experience of a trained product installer. You are required to thoroughly read all installation instructions and product safety information before beginning the installation of this product.

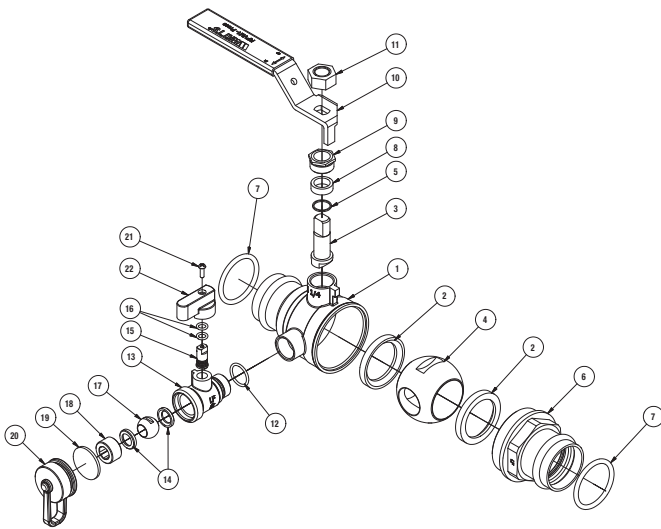
NOTICE

Inquire with governing authorities for local installation requirements

*The wetted surface of this product contacted by consumable water contains less than 0.25% of lead by weight.

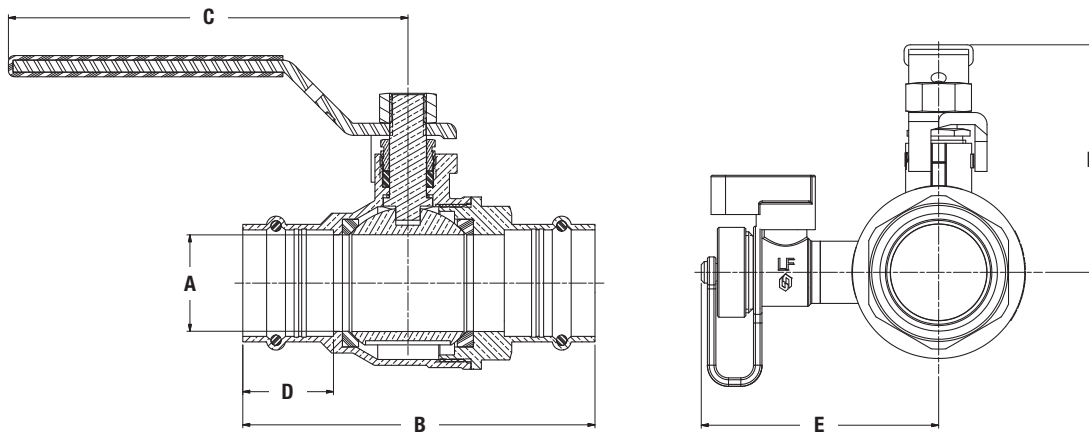
Watts product specifications in U.S. customary units and metric are approximate and are provided for reference only. For precise measurements, please contact Watts Technical Service. Watts reserves the right to change or modify product design, construction, specifications, or materials without prior notice and without incurring any obligation to make such changes and modifications on Watts products previously or subsequently sold.

Materials



- | | |
|------------------|-------------|
| 1. Body | Brass |
| 2. Seat | PTFE |
| 3. Stem | Brass |
| 4. Ball | Brass |
| 5. Thrust Washer | PTFE |
| 6. Adapter | Brass |
| 7. O-ring | EPDM |
| 8. Packing | PTFE |
| 9. Packing Nut | Brass |
| 10. Handle | Steel |
| 11. Hex Jam Nut | Steel |
| 12. O-ring | EPDM |
| 13. Body | Brass |
| 14. Seat | PTFE |
| 15. Stem | Brass |
| 16. O-ring | EPDM |
| 17. Ball | Brass |
| 18. Adapter | Brass |
| 19. Cap Seal | EPDM |
| 20. Cap & Tether | Brass & PVC |
| 21. Screw | Steel |
| 22. Handle | Aluminum |

Dimensions - Weights



DESCRIPTION	ORDERING CODE	SIZE	DIMENSIONS										WEIGHT			
			Ø A		B		C		D		E		F		lbs	kg
		in	in	mm	in	mm	in	mm	in	mm	in	mm	in	mm		
1/2 RPVM1-Press	88009100	1/2	9/16	15	3 3/8	87	3 13/16	97	1 1/8	28	2 1/2	64	1 11/16	42	0.78	0.4
3/4 RPVM1-Press	88009101	3/4	3/4	19	3 13/16	97	3 13/16	97	1 3/16	30	2 11/16	68	1 15/16	49	1.02	0.5
1 RPVM1-Press	88009102	1	1	25	4 1/8	105	4 7/16	112	1 1/16	30	2 7/8	74	2 5/16	59	1.41	0.6
1 1/4 RPVM1-Press	88009103	1 1/4	1 1/4	32	4 9/16	117	5 3/16	132	1 3/16	30	3 1/16	79	2 3/4	69	2.11	1.0
1 1/2 RPVM1-Press	88009104	1 1/2	1 9/16	39	5 1/16	131	5 3/16	132	1 3/8	35	3 5/16	84	2 15/16	75	2.84	1.3
2 RPVM1-Press	88009105	2	1 15/16	50	6	153	6 7/16	164	1 9/16	40	3 5/8	93	3 3/16	90	4.45	2.0

