



# pure water

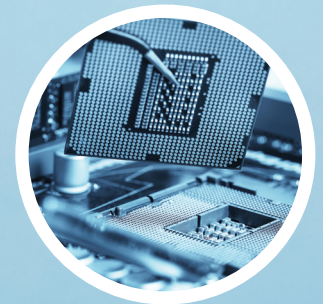
# Commercial Water Softening Solutions

## One Size Doesn't Fit All

No two customers are exactly alike – especially when it comes to commercial water treatment.

Every customer has a unique set of circumstances, application needs, specs, budgets, and timelines that they're faced with. That's why Watts offers custom design, engineering, manufacturing, skid mounting and pre-plumbed water softening systems that are tailored to the needs of your customers across a wide variety of industries and applications including:

- ▶ Agricultural & Irrigation
- ▶ Chemical & Industrial Processing
- ▶ Commercial Laundries
- ▶ Food, Beverage & Ice Production
- ▶ General Potable Water
- ▶ Government & Institutional
- ▶ Hospitals, Medical & Laboratory Facilities
- ▶ Hotels & Resorts
- ▶ Universities & Education
- ▶ Metal Plating & Surface Finishing
- ▶ Municipalities & Utilities
- ▶ Paper & Pulp Manufacturing
- ▶ Petroleum, Gas & Mining
- ▶ Pharmaceuticals & Cosmetics
- ▶ Power & Steam Generation
- ▶ Textiles, Ink & Dye Manufacturing





# pure water



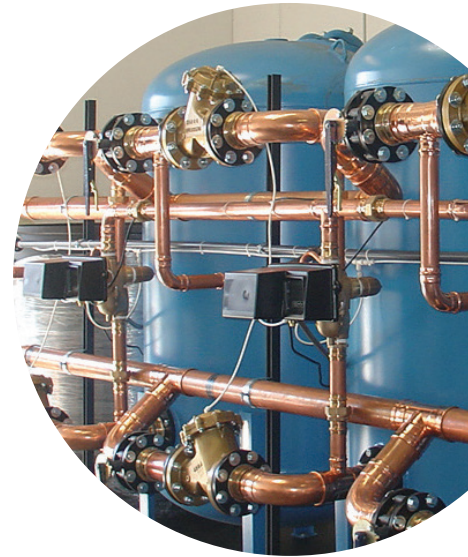
## Custom Skids – Made To Order

We can customize any standard skid to meet your customer’s specific needs including ASME certified tanks, pro-press copper fittings, mix and match tanks and more.

Watts skid-mounted water softening systems save you time and money too – by reducing on-site labor and installation expense. We also test every system before it goes out the door.

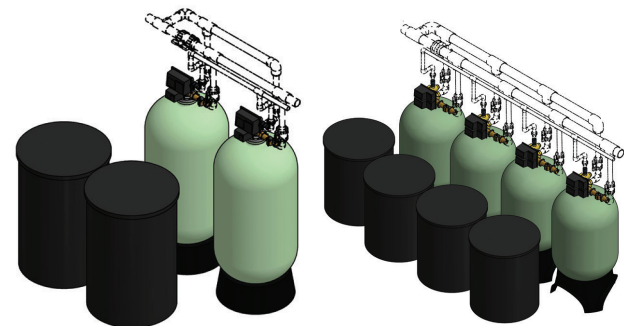
## Standard Progressive Commercial Water Softening Systems

- ▶ Ideal for high flow and high capacity applications.
- ▶ Include flow demand staging to accommodate wide variances in flow rates.
- ▶ Come standard with no hard water bypass pistons.
- ▶ Each mineral tanks has its own control valve, brine tank and flow meter.



### Series PWS20P

Connection Size: 2” (50 mm)  
Flow Rates: Up to 420 gpm (1590 lpm)

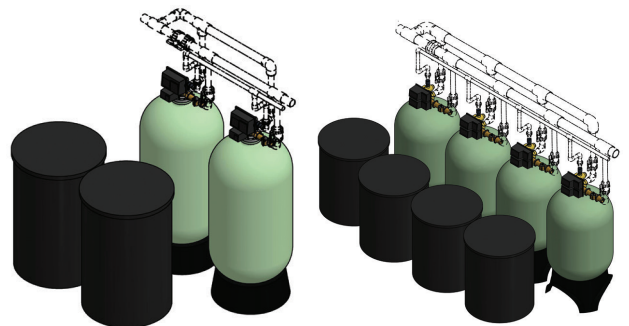


*Duplex Progressive*

*Quadplex Progressive*

### Series PWS30P

Connection Size: 3” (80 mm)  
Flow Rates: Up to 1,120 gpm (4240 lpm)



*Duplex Progressive*

*Quadplex Progressive*



Contact your local Watts representative or email us at [Purewatercommercial.RFQ@wattswater.com](mailto:Purewatercommercial.RFQ@wattswater.com) and we’ll build a customized skid solution for you.

**USA:** (800) 224-1299 · [Watts.com/PureWater](http://Watts.com/PureWater)  
**Canada:** (905) 332-4090 · [Watts.ca/PureWater](http://Watts.ca/PureWater)  
**Latin America:** (52) 55-4122-0138 · [Watts.com/PureWater](http://Watts.com/PureWater)