

onAER Predictive Maintenance

AERCO's onAER Predictive Maintenance is an affordable, easy-to-use health of system monitoring that gives you instant access to unit performance details, event history, maintenance schedules and more. onAER helps ensure your system operates at peak performance while reducing cost of ownership.

Reduce Cost of Ownership

- Avoid lost revenue due to undetected equipment faults and downtime
- Generate regular reports that aid in decision making and cost-saving improvements
- Prevent unnecessary wear-and-tear/premature failure of your equipment

Increase Reliability and Energy Savings

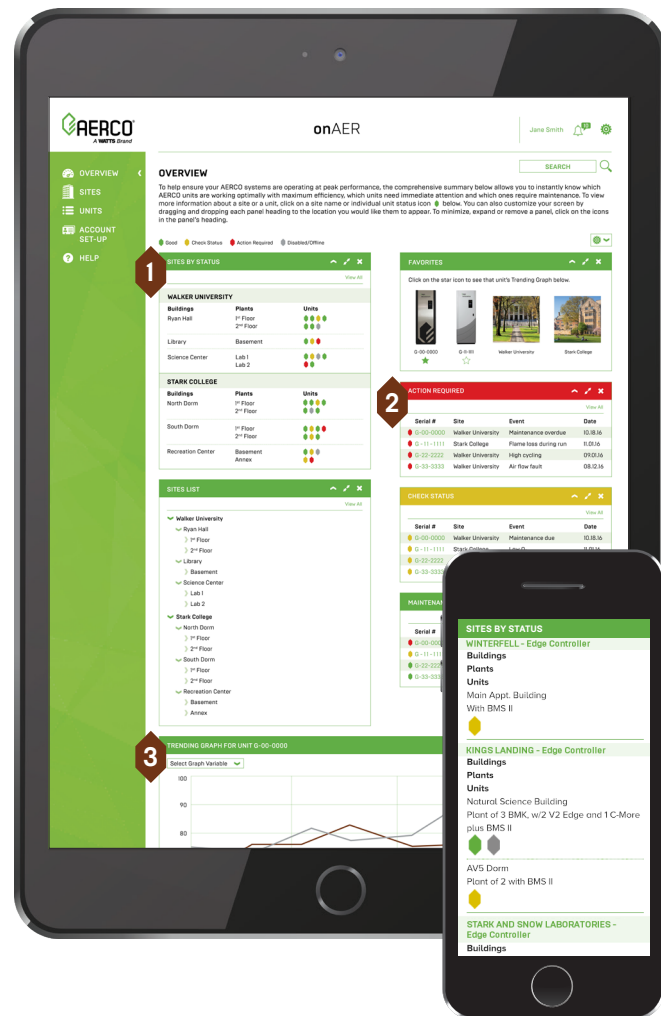
- Optimize system performance with real-time data
- Identify energy-saving opportunities by trending multiple data points including efficiency, cycles per hour, O₂ levels, temperature readings, etc.

Decrease Service Calls up to 50%

- Identify and fix potential issues before they become a problem and reduce labor costs from emergency service calls
- Implement a more responsive and scheduled maintenance plan

onAER typically identifies 4-5% system efficiency losses which can translate into \$2,000 to \$6,000* in fuel savings

Plant BTU	10 Year Identified Savings
2,000,000	\$12,000
4,000,000	\$21,000
6,000,000	\$25,000
8,000,000	\$31,000
10,000,000	\$47,000
12,000,000	\$55,000
14,000,000	\$75,000
16,000,000	\$81,000



Easy-to-Use, Customizable Home Page

1. Intuitive, color-coded performance status for all units, plants and sites
2. Priority lists of units that demand immediate action, need attention or require maintenance
3. Trend multiple parameters including heartbeat records, outlet temperatures, valve positions, and more

*Based on typical AERCO heating system design

Simplify Service and Reduce Unscheduled Maintenance

Reduce Downtime with Instant Alerts

- Receive immediate email alerts about a fault or decline in equipment performance
- Pro-actively resolve issues quickly
- Prevent more serious problems from developing

Simplify On-Site Repairs

- Armed with performance and fault details, technicians can arrive equipped with parts to allow them to work faster and more cost-efficiently
- View list of possible causes and suggested actions to help technicians fix problems quickly
- Submit maintenance/service and start-up forms via onAER

Solve Non-Critical Problems on Your Time

- Schedule service at your convenience
- Minimize facility and occupant disruptions

Secure, Remote Monitoring and Management

- Easily installed over secure, authorized ethernet connection
- Data travels outbound only eliminating any security risks
- Wi-Fi module is available to connect to your wireless network
- No firewall rules or changes necessary

Contact us at sales@aerco.com.

TECHNICAL DATA

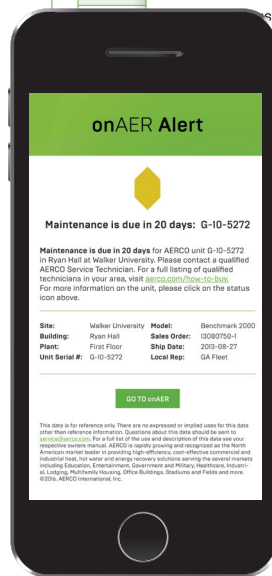
Technical data for **Unit # G-10-5272** at Walker University is listed below. To add this unit's Trending Graph to the "Add to Favorites" button at the right. To add a new start-up form, disable faults, enable shut downs, or record performed, click on the green links below.

Site:	Walker University	Model:	Benchmark 2000	Add New Start-up Form
Building:	Ryan Hall	Sales Order:	13080750-1	Disable Faults for 24 Hours
Plant:	First Floor	Ship Date:	2013-08-27	Maintenance/Service Performed
Unit Serial #:	G-10-5272	Local Rep:	GA Fleet	Extended Period Shutdown

STATUS OVERVIEW

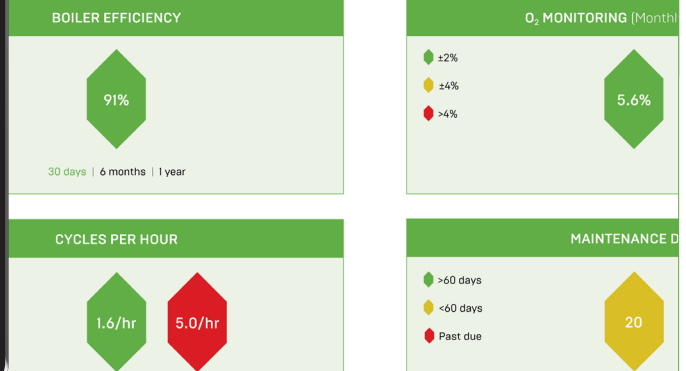
Unit status:	Auto	Faults Enabled/Disabled:	Disabled for xx hours/days
Age of last heartbeat record:	18263:46:45	Extended period shutdown:	Enabled
Total run cycles:	532091		

Event: Flame Loss During Run	
Possible Cause	Suggested Action
1. Faulty Water temperature switch.	1. Test the temperature switch to insure it trips the actual water temperature.
2. Incorrect PID settings.	2. Check PID settings against Menu Default settings in the Appendix. If the current readings then reset them to the default values.
3. Faulty	



Overview of **Unit # G-10-5272** at Walker University. For more details and technical information, click on the 'Technical Data' button at the right. To add a new start-up form, disable faults, enable shut downs, or record performed, click on the green links below.

Site:	Walker University	Model:	Benchmark 2000	Add New Start-up Form
Building:	Ryan Hall	Sales Order:	13080750-1	Disable Faults for 24 Hours
Plant:	First Floor	Ship Date:	2013-08-27	Maintenance/Service Performed
Unit Serial #:	G-10-5272	Local Rep:	GA Fleet	Extended Period Shutdown



Heating and Hot Water Solutions

AERCO International, Inc. • 100 Oritani Drive • Blauvelt, NY 10913
 USA: T: (845) 580-8000 • Toll Free: (800) 526-0288 • AERCO.com