

Instructions for Installing Thermal Actuator Control Modules

Multi-Zone Controller for use with Thermal Actuators

WARNING



Read these instructions and all product labels BEFORE installation. Installation must be performed by qualified personnel, in accordance with local codes and standards.

FAILURE TO COMPLY WITH PROPER INSTALLATION INSTRUCTIONS COULD DAMAGE PIPING, CONNECTIONS, AND ELECTRICAL ELEMENTS WHICH MAY CAUSE WATER DAMAGE AND/OR DAMAGE TO THE PIPING SYSTEM WHICH CAN RESULT IN PROPERTY DAMAGE AND/OR PERSONAL INJURY

NOTICE

Thermal Actuator Control Modules are not water resistant. Install in a dry location away from possible exposure to water.

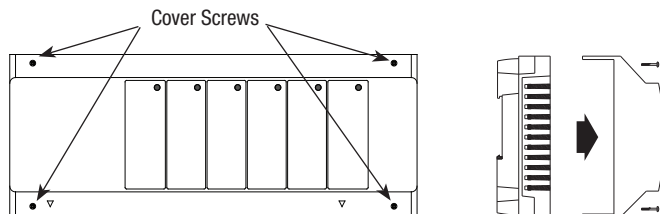
Do not exceed the electrical capacity of the module terminals..

Installation of Control

Control modules come in two main configurations, Master and Slave. Connect a Slave module to either a 4 or 6 zone Master if more than the allotted 4 or 6 zones are required. No more than 3 modules can be connected together.

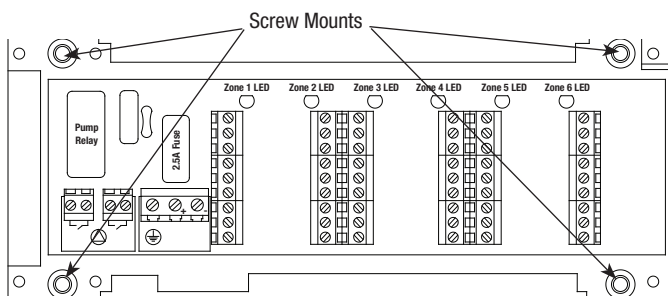
Both Master and Slave modules can be either DIN rail mounted or screwed to a suitable backer.

1. Remove the cover.



2. Mount control

Directly to a flat surface: Secure control to surface with 1/4" screws through the provided mounting holes.



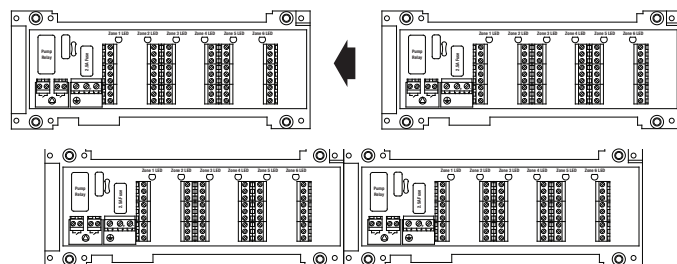
Directly to DIN Rail: Tilt control so the DIN Rail slides into the top slot on the back of the control. Press downward until the bottom of the control "clicks" in to place.

3. Connect all electrical connections. Maximum of 3 actuators per thermostat.
4. Replace cover.

Item	Feature/Capacity
Max VA/Terminal Block	7.5 VA
Max Amp/Terminal Block	0.3 A
Max Number of Actuators/Terminal Block	3
Max Number of Actuators	18
4 Zone Size	6-3/4" x 3-1/2"
6 Zone Size	8-3/4" x 3-1/2"

When using expansion modules, secure the module to the DIN rail before sliding the two modules together. Modules should sit flush against each other.

When mounting to a flat surface, install the Master Module first, securing it to the surface with the use of screws. Connect the expansion module and screw to the surface.



✓	Order #	Description
	81005192	Master, 4 Zone Control
	81005190	Master, 6 Zone Control
	81009509	60 VA Transformer
	81005246	Slave, 4 Zone Control Extension
	81005191	Slave, 6 Zone Control Extension

Wiring Detail

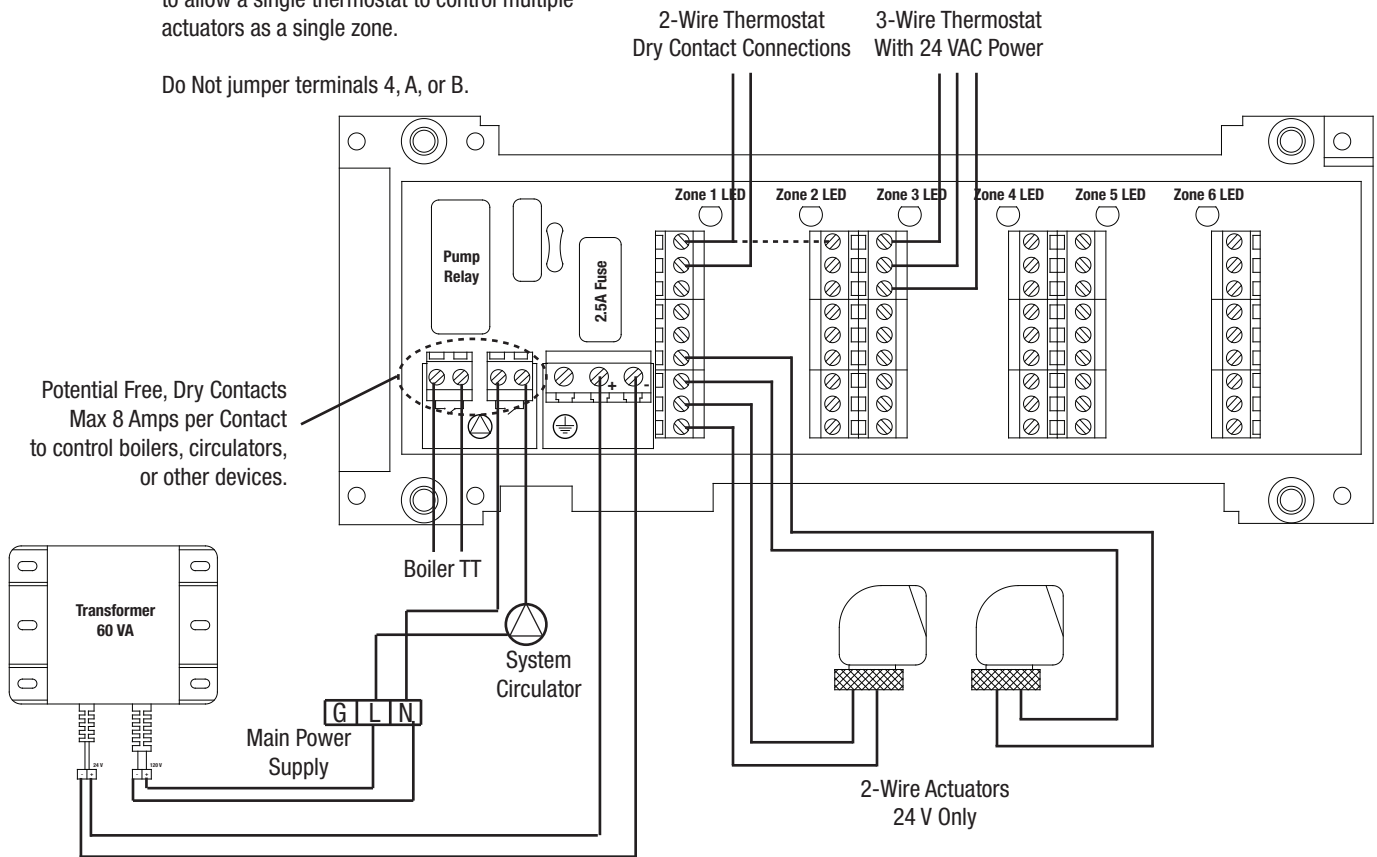
Both Master and Slave controls are designed to operate with a dedicated 24 VAC power supply. Two dry contact relays are provided on each to control external components such as circulators, boilers, or other devices. Each relay can switch between 24 VAC and 120 VAC.

CAUTION:

- Never connect a power consuming 2-wire thermostat to the control as damage to the thermostat and/or control may occur.
- The maximum total load per terminal block is 0.3 A, or 7.5 VA, and/or 3 actuators.
- External 24/120 VAC 60 VA transformer (81009509) is recommended for all applications.
- Never jumper terminal points 4, A or B on the zone terminal blocks as this may cause damage to the thermostat, the controller or both.
- Control does not use the end-switch wires of a 4-wire actuator.

Jumpers need to be ran from terminal 1 to 1 to allow a single thermostat to control multiple actuators as a single zone.

Do Not jumper terminals 4, A, or B.



Limited Warranty: Watts (the "Company") warrants each product to be free from defects in material and workmanship under normal usage for a period of one year from the date of original shipment. In the event of such defects within the warranty period, the Company will, at its option, replace or recondition the product without charge.

THE WARRANTY SET FORTH HEREIN IS GIVEN EXPRESSLY AND IS THE ONLY WARRANTY GIVEN BY THE COMPANY WITH RESPECT TO THE PRODUCT. THE COMPANY MAKES NO OTHER WARRANTIES, EXPRESS OR IMPLIED. THE COMPANY HEREBY SPECIFICALLY DISCLAIMS ALL OTHER WARRANTIES, EXPRESS OR IMPLIED, INCLUDING BUT NOT LIMITED TO THE IMPLIED WARRANTIES OF MERCHANTABILITY AND FITNESS FOR A PARTICULAR PURPOSE.

The remedy described in the first paragraph of this warranty shall constitute the sole and exclusive remedy for breach of warranty, and the Company shall not be responsible for any incidental, special or consequential damages, including without limitation, lost profits or the cost of repairing or replacing other property which is damaged if this product does not work properly, other costs resulting from labor charges, delays, vandalism, negligence, fouling caused by foreign material, damage from adverse water conditions, chemical, or any other circumstances over which the Company has no control. This warranty shall be invalidated by any abuse, misuse, misapplication, improper installation or improper maintenance or alteration of the product.

Some States do not allow limitations on how long an implied warranty lasts, and some States do not allow the exclusion or limitation of incidental or consequential damages. Therefore the above limitations may not apply to you. This Limited Warranty gives you specific legal rights, and you may have other rights that vary from State to State. You should consult applicable state laws to determine your rights. **SO FAR AS IS CONSISTENT WITH APPLICABLE STATE LAW, ANY IMPLIED WARRANTIES THAT MAY NOT BE DISCLAIMED, INCLUDING THE IMPLIED WARRANTIES OF MERCHANTABILITY AND FITNESS FOR A PARTICULAR PURPOSE, ARE LIMITED IN DURATION TO ONE YEAR FROM THE DATE OF ORIGINAL SHIPMENT.**



USA: Tel: (800) 276-2419 • Fax: (417) 864-8161 • Watts.com

Canada: Tel: (905) 332-4090 • Fax: (905) 332-7068 • Watts.ca

Latin America: Tel: +52 55 4122 0138 • Fax: (52) 81-8000-7091 • Watts.com