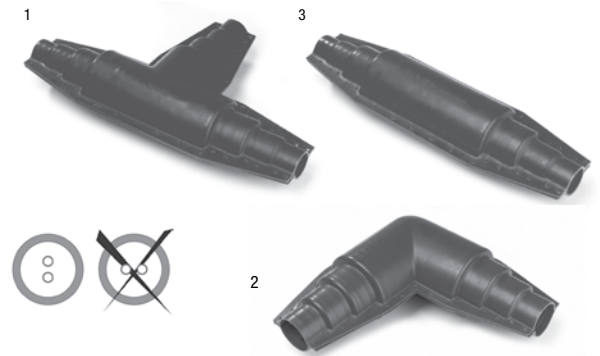


# Instructions for R-flex Casings

Intersections generally consist of (1) branch tees, (2) elbows, or (3) mid-run couplings used to extend a run of R-flex. Each of these connections need to be encased in a connection casing - a waterproof protective shell.

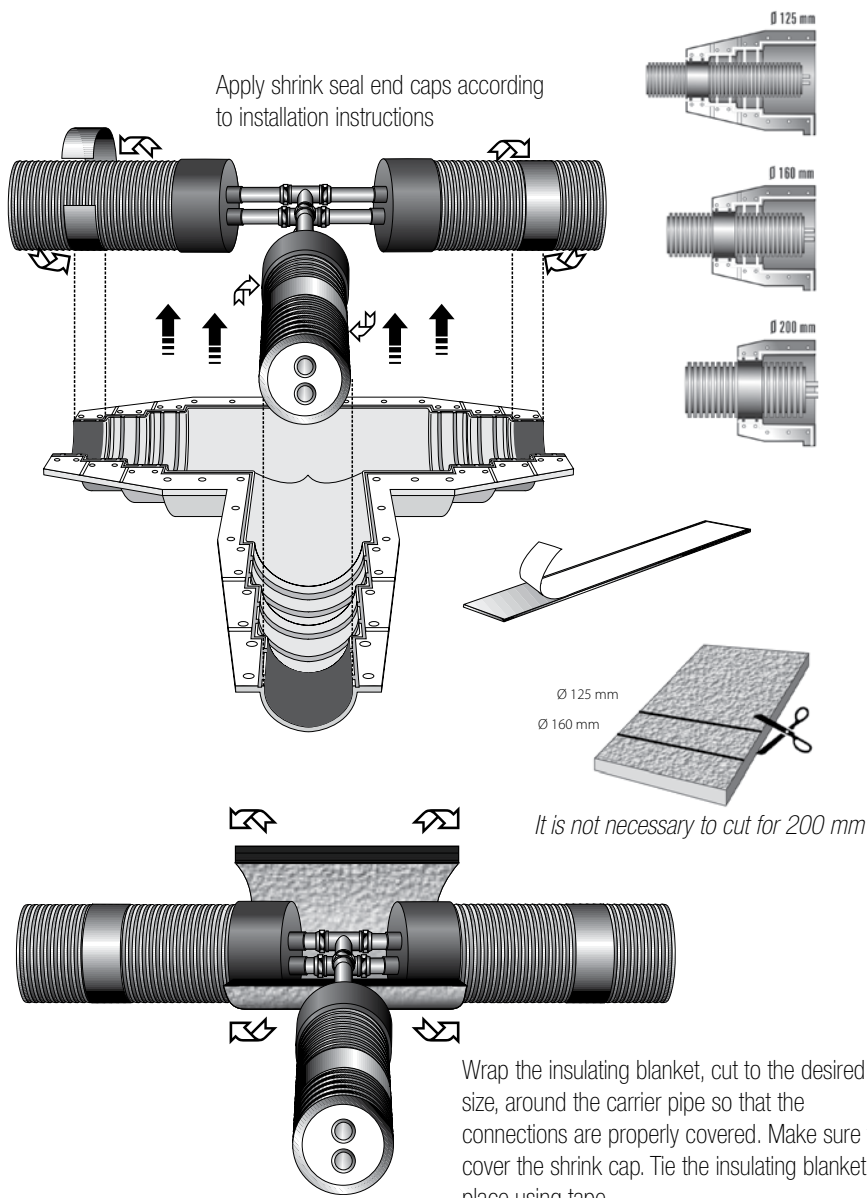
When creating an intersection, make sure to follow these guidelines fully in order to maintain the warranty.

Keep R-flex Dual systems oriented in the vertical plane, as illustrated to right. This will allow for proper assembly of the internal connections. This is especially critical when installing Tee intersections.



Casings are available in (1) Tees, (2) Elbows, and (3) Couplings. R-flex must be run in the vertical plane to avoid installation issues inside the casing.

## Installation



Each casing has a series of stepped collars at each point of entry. These are designed to fit each of the three main outer jacket sizes of R-flex – 125 mm, 160 mm, and 200 mm respectively. These steps are to be cut to accommodate the size of pipe being used.

Trim the casings before installing them in the trench. Inserting the R-flex into the lower half of the casing will facilitate gauging of fit and trim points on the R-flex.

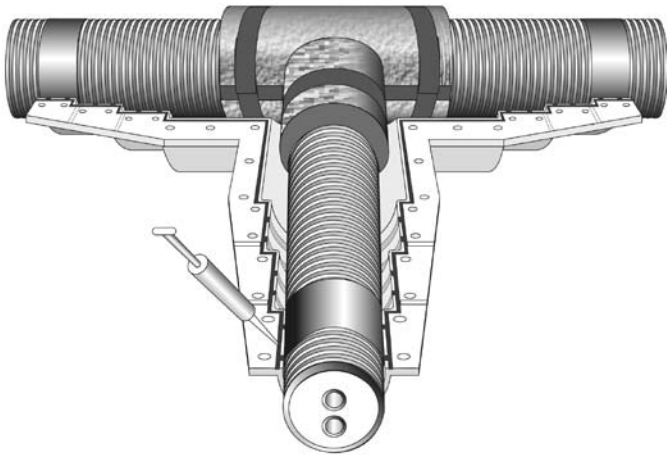
Do not cut a step intended for larger R-flex than being used. Doing so will cause an improper seal at the transition point.

Use the casing as a guide when determining how much of the outer jacket to remove. The outer jacket must extend to the last "step" (200 mm) area. Mark the R-flex and carefully remove the outer jacket – taking care not to damage the internal PEX piping.

Replace the R-flex in the casing and mark where to trim the PEX pipe.

Apply the shrink caps, using the techniques described in the Transition section of the manual.

Apply connections to the PEX tubing. Make sure the outer Jacket remains within the 200 mm step of the casing.



Each casing kit comes with bitumen strips (2 with couplings and elbows, 3 with tees) and an insulation blanket. Cut the strips to fit the pipe size. Do not cut the strips so they overlap as an improper fit will result at the entry point.

Remove the protective layer and fit the bitumen strips to the outside of the R-flex jacket and inside of the insulation casings at the (2 or 3) pipe entry points.

Apply a uniform bead of sealant to the grooves of both the upper and lower shell casings. Keep the bead to a thickness of about 5/32" (4 mm) to 3/16" (5 mm wide).

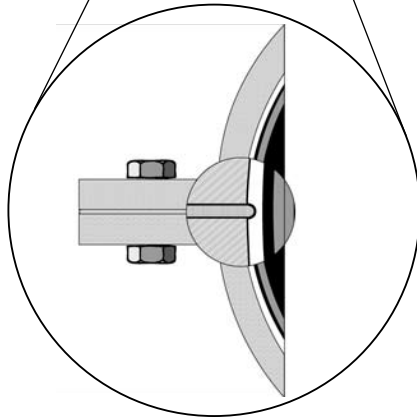
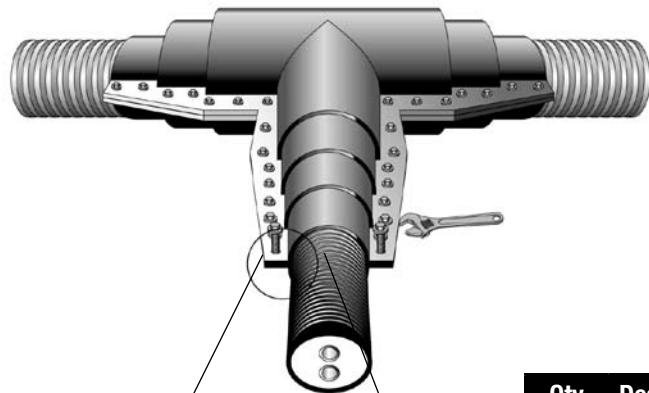
Insert the R-flex into the lower casing.

Apply sealant at a uniform rate along flanges of top and bottom casing (next to the drilled holes) to yield a thickness of about 1/4" (6 mm).

Carefully align the two casing halves and insert the stainless steel bolts. Tighten the stainless bolts.

Check that the sealant is being squeezed through the side of the casing. This will indicate proper distribution of the sealant across the casing flange.

Refer to the R-flex Installation Manual and the Shrink End Cap Installation Sheet for additional installation details.



Qty	Description	Order #	Model #
1	Straight Casing, 125-200mm pipes	81012549	RFCS-125200
1	Y Casing, 125-200mm pipes	81012547	RFCY-125200
1	Elbow Casing, 125-200mm pipes	81012548	RFCE-125200
1	Tee Casing, 125-200mm pipes	81012550	RFCT-125200

**Limited Warranty:** Watts Radiant (the "Company") warrants each product to be free from defects in material and workmanship under normal usage for a period of ten years from the date of original shipment. In the event of such defects within the warranty period, the Company will, at its option, replace or recondition the product without charge.

**THE WARRANTY SET FORTH HEREIN IS GIVEN EXPRESSLY AND IS THE ONLY WARRANTY GIVEN BY THE COMPANY WITH RESPECT TO THE PRODUCT. THE COMPANY MAKES NO OTHER WARRANTIES, EXPRESS OR IMPLIED. THE COMPANY HEREBY SPECIFICALLY DISCLAIMS ALL OTHER WARRANTIES, EXPRESS OR IMPLIED, INCLUDING BUT NOT LIMITED TO THE IMPLIED WARRANTIES OF MERCHANTABILITY AND FITNESS FOR A PARTICULAR PURPOSE.**

The remedy described in the first paragraph of this warranty shall constitute the sole and exclusive remedy for breach of warranty, and the Company shall not be responsible for any incidental, special or consequential damages, including without limitation, lost profits or the cost of repairing or replacing other property which is damaged if this product does not work properly, other costs resulting from labor charges, delays, vandalism, negligence, fouling caused by foreign material, damage from adverse water conditions, chemical, or any other circumstances over which the Company has no control. This warranty shall be invalidated by any abuse, misuse, misapplication, improper installation or improper maintenance or alteration of the product.

Some States do not allow limitations on how long an implied warranty lasts, and some States do not allow the exclusion or limitation of incidental or consequential damages. Therefore the above limitations may not apply to you. This Limited Warranty gives you specific legal rights, and you may have other rights that vary from State to State. You should consult applicable state laws to determine your rights. **SO FAR AS IS CONSISTENT WITH APPLICABLE STATE LAW, ANY IMPLIED WARRANTIES THAT MAY NOT BE DISCLAIMED, INCLUDING THE IMPLIED WARRANTIES OF MERCHANTABILITY AND FITNESS FOR A PARTICULAR PURPOSE, ARE LIMITED IN DURATION TO ONE YEAR FROM THE DATE OF ORIGINAL SHIPMENT.**



**USA:** 4500 East Progress Place, Springfield, MO 65803; [www.wattsradiant.com](http://www.wattsradiant.com)  
**Canada:** 5435 North Service Rd., Burlington, ONT. L7L 5H7; [www.wattscanada.ca](http://www.wattscanada.ca)