

## Models: 165, 166DI

Job Name \_\_\_\_\_

Contractor \_\_\_\_\_

Job Location \_\_\_\_\_

Approval \_\_\_\_\_

Engineer \_\_\_\_\_

Contractor's P.O. No. \_\_\_\_\_

Approval \_\_\_\_\_

Representative \_\_\_\_\_

# Cast Iron and Ductile Iron Flanged End Basket Strainers

**Models: 165, 166-DI**  
**Sizes: 1¼" - 24"**



Models 165, 166-DI  
 \*165-DI available upon request.  
 Consult Factory.

PRESSURE/TEMPERATURE–NON-SHOCK		
Model	Material	Rating
165 1¼" - 12"	Cast Iron	200psi @ -20°F to 150°F
		13.79 bar @ 65.56°C
		140psi @ 406°F
		9.65 bar @ 207.78°C
165 14" - 24"	Cast Iron	150psi @ -20°F to 150°F
		10.34 bar @ 65.56°C
		100psi @ 353°F
		6.89 bar @ 178.33°C
166-DI 1¼" - 16"	Ductile Iron	640psi @ -20°F to 100°F
		10.34 bar @ 65.56°C
		450psi @ 650°F
		31.03 bar @ 343.33°C

Max. temp. can be limited by gasket material. Consult factory.

**165**                      **Cast Iron**                      **Class 125**  
**166-DI**                    **Ductile Iron**                      **Class 300**

### Typical Service

- These strainers can be specified for cooling water, sea water, hot water systems and more.
- They are especially suited for medium or coarse straining. For finer straining, see Model 125.

### Features

- The angular cutaway design of the baskets allows a straight through flow, resulting in extremely low pressure drop.
- Tapped and plugged NPT drain on the strainer bottom enables easy self-cleaning on open bottom baskets. Simply open the valve or plug on the outlet to flush accumulated particles.
- Bodies can be tapped for pressure gauges, or per customer requirement. Consult factory.

### Construction

- Cover is a flanged bolted design for easy basket removal.

### Capacity

- Minimum 6 to 1 ratio.

### Galvanizing

- Available on all sizes, consult factory

### Baskets

MODEL	SIZES	STANDARD (WATER)		STEAM RECOMMENDATION	
		MATERIAL	OPENING	MATERIAL	OPENING
165, 166-DI	1¼" – 4"	304SS	.062 perf	304SS	.045 perf
165, 166-DI	5" and Up	304SS	.125 perf	Consult Factory	

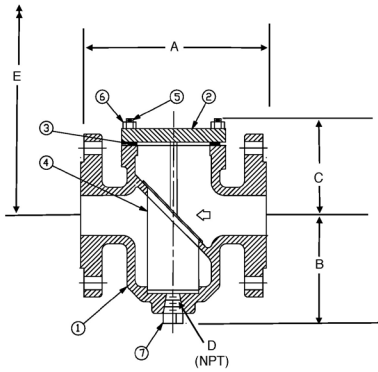
### NOTICE

The information contained herein is not intended to replace the full product installation and safety information available or the experience of a trained product installer. You are required to thoroughly read all installation instructions and product safety information before beginning the installation of this product.

Mueller Steam Specialty product specifications in U.S. customary units and metric are approximate and are provided for reference only. For precise measurements, please contact Mueller Steam Specialty Technical Service. Mueller Steam Specialty reserves the right to change or modify product design, construction, specifications, or materials without prior notice and without incurring any obligation to make such changes and modifications on Mueller Steam Specialty products previously or subsequently sold.



## Material



## Pressure Drop

See Pressure Drop Charts in Technical Data section of the Mueller Steam Specialty Engineering binder. Cv values are noted in the Dimensions and Weights table below.

## Dimensions and Weights

SIZE	DIMENSIONS						WEIGHT			Cv			
	A		B		C		D (NPT)		E (NPT)		lbs.	kgs.	GPM
in.	in.	mm	in.	mm	in.	mm	in.	mm	in.	mm			
<b>165</b>													
1 1/4"	6 3/8"	162	4 1/8"	105	3 5/8"	92	1/2"	15	7"	178	32	14	38
1 1/2"	6 1/2"	165	4 1/8"	105	3 5/8"	92	1/2"	15	7"	178	32	14	43
2"	8 5/8"	219	5 7/8"	149	4 3/8"	111	1/2"	15	12"	305	32	14	45
2 1/2"	7 7/16"	189	5 7/16"	138	3 3/4"	95	3/4"	20	12"	305	28	12	85
3"	8 3/4"	222	5 1/4"	133	5 1/8"	130	3/4"	20	12"	305	37	16	140
4"	11 1/16"	284	7 7/8"	200	5 5/8"	143	1"	25	16"	406	63	28	290
5"	12 1/4"	311	10 1/4"	260	5"	127	1"	25	16"	406	98	44	500
6"	14"	356	10 3/8"	270	5 5/8"	143	1 1/4"	32	17 1/2"	457	122	55	800
8"	17 7/8"	435	15 1/2"	394	7"	178	1 1/2"	40	23 1/2"	610	198	90	1,600
10"	22"	559	16"	406	9 1/4"	235	1 1/2"	40	20"	610	350	159	3,200
12"	25 1/4"	645	23 3/4"	603	11 5/8"	295	2"	50	39 1/2"	1016	716	325	5,000
14"	29 5/8"	756	26 3/4"	679	12 1/4"	311	2"	50	45 1/4"	1168	1010	459	7,500
16"	31 7/8"	810	29 1/2"	749	13 3/16"	335	2"	50	47 5/8"	1219	1320	600	9,500
18"	34"	964	36"	914	16 1/4"	412	2"	50	59 1/4"	1524	1916	870	13,500
20"	36 5/8"	930	40 7/8"	1038	17"	432	2"	50	67"	1702	2468	1121	17,500
24"	41 1/2"	1054	46 1/4"	1174	19 1/8"	486	2"	50	74 1/2"	1905	4550	2068	20,000

<b>166-DI</b>													
1 1/4"	-	-	4 1/8"	105	3 5/8"	92	1/2"	15	7"	178	40	18	38
1 1/2"	-	-	4 1/8"	105	3 5/8"	92	1/2"	15	7"	178	40	18	43
2"	8 5/8"	219	5 7/8"	149	4 3/8"	111	1/2"	15	12"	305	40	18	45
2 1/2"	8 3/8"	213	5 7/16"	138	3 3/4"	95	3/4"	20	12"	305	30	13	85
3"	9 9/16"	243	5 1/4"	133	5 1/8"	130	3/4"	20	12"	305	52	23	140
4"	11 1/2"	292	7 7/8"	200	5 5/8"	143	1"	25	16"	406	90	40	290
5"	13 1/4"	337	10 1/4"	260	5"	127	1"	25	16"	406	128	58	500
6"	15 1/2"	394	10 3/8"	270	5 5/8"	143	1 1/4"	32	17 1/2"	457	224	101	800
8"	18 7/8"	460	15 1/2"	394	7"	178	1 1/2"	40	23 1/2"	610	240	109	1,600
10"	23 3/4"	591	16"	406	9 1/4"	235	1 1/2"	40	20"	610	460	209	3,200
12"	26 1/2"	673	23 3/4"	603	11 5/8"	295	2"	50	39 1/2"	1016	854	388	5,000
14"	31 1/4"	793	26 3/4"	679	12 1/4"	311	2"	50	45 1/4"	1168	1182	537	7,500
16"	33 1/2"	851	29 1/2"	749	13 3/16"	335	2"	50	47 5/8"	1219	1540	700	9,500

Apply for Certified Drawings.

**Limited Warranty:** Mueller Steam Specialty warrants each product to be free from defects in material and workmanship under normal usage for a period of one year from the date of original shipment. In the event of such defects within the warranty period, the Company will, at its option, replace or recondition the product without charge. This shall constitute the sole and exclusive remedy for breach of warranty, and the Company shall not be responsible for any incidental, special or consequential damages, including without limitation, lost profits or the cost of repairing or replacing other property which is damaged if this product does not work properly, other costs resulting from labor charges, delays, vandalism, negligence, fouling caused by foreign material, damage from adverse water conditions, chemical, or any other circumstances over which the Company has no control. This warranty shall be invalidated by any abuse, misuse, misapplication or improper installation of the product. **THIS WARRANTY IS IN LIEU OF ALL OTHER WARRANTIES, EXPRESS OR IMPLIED, INCLUDING ANY IMPLIED WARRANTIES OF MERCHANTABILITY OR FITNESS FOR A PARTICULAR PURPOSE.** Any implied warranties that are imposed by law are limited in duration to one year.

Some States do not allow limitations on how long an implied warranty lasts, and some States do not allow the exclusion or limitation of incidental or consequential damages. Therefore the above limitations may not apply to you. This Limited Warranty gives you specific legal rights, and you may have other rights that vary from State to State. You should consult applicable state laws to determine your rights.



A WATTS Brand

USA: T: (800) 334-6259 • F: (800) 421-6772 • MuellerSteam.com

Latin America: T: (52) 81-1001-8600 • MuellerSteam.com

BILL OF MATERIAL MODEL 165		
ITEM	DESCRIPTION	MATERIAL
1	BODY	Cast Iron ASTM A126-B
2	COVER**	Cast Iron ASTM A126-B (1-1/4" - 4") A516-70 (5" - 24")
3	COVER GASKET	Compressed Fiber
4	BASKET	304 SS
5	STUDS	ASTM A193 B7
6	NUTS	ASTM A194 2H
7	PLUG	ASTM A105

BILL OF MATERIAL MODEL 165DI		
ITEM	DESCRIPTION	MATERIAL
1	BODY	Ductile Iron ASTM 395
2	COVER**	Cast Iron ASTM A126-B (1-1/4" - 4") A516-70 (5" - 18")
3	COVER GASKET	Compressed Fiber
4	BASKET	304 SS
5	STUDS	ASTM A193 B7
6	NUTS	ASTM A194 2H
7	PLUG	ASTM A105

\*\* Cover may be manufactured from equivalent grade plate material