

**Models: 1011, 1012**

Job Name \_\_\_\_\_

Contractor \_\_\_\_\_

Job Location \_\_\_\_\_

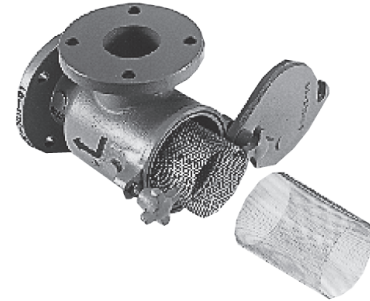
Approval \_\_\_\_\_

Engineer \_\_\_\_\_

Contractor's P.O. No. \_\_\_\_\_

Approval \_\_\_\_\_

Representative \_\_\_\_\_

**LEAD FREE\*****Cast Iron & Ductile Iron  
Flanged End  
Suction Diffusers****Model: 1011, 1012****Sizes: 2"x1¼" - 18"x12"**

Models 1011, 1012

PRESSURE/TEMPERATURE-NON-SHOCK		
Model	Sizes	Rating (CWF)
1011	2"-12"	200psi @ 150°F (14 bar @ 66°C) 165psi @ 300°F EPDM
1011	14" and Up	150psi @ 150°F (10.3 bar @ 66°C) 110psi @ 300°F EPDM
1012		300psi @ 100°F (21 bar @ 38°C)

Max. temp. can be limited by gasket material.  
Consult factory.

**1011**                      **Class 125**  
**1012**                      **Class 300**

Mueller Steam Specialty Suction Diffusers provide economical and compact pump protection by straining foreign particles and providing proper flow conditions to the pump.

**Typical Service**

- Mounts directly to the suction side of a pump, in either horizontal or vertical position.

**Features**

- Compact design enables this one unit to act as an elbow, strainer, and entry pipe to the suction side of the pump. This reduces installation time, overall cost, and reduces joint leak paths.
- Equal size flanges or reduced outlet flange sizes available. Reduced outlet design eliminates the need for a reducing base elbow.
- Quick opening knobs allow for quick maintenance. Bolted cover is available on 1012 model.
- O-ring seal eliminates the need to clean the sealing area and install a new flat gasket in competitive models.

- Straightening vanes on the Suction Diffuser's outlet side reduces turbulence into the pump. These minimize stress and erosion within the pump, and eliminate the need for a length of straight pipe to diminish turbulence.
- Robust 5 to 1 Open Area Ratio and blow off feature extend the time between servicing and allows for ease of draining and flushing
- A separate removable fine mesh screen liner is installed in each Diffuser for start-up. After the start-up period, simply remove and discard, leaving the primary screen for operation.
- Special pads fit the I.D. of standard pipe, eliminating the need for pipe saddles and relieving stress on hanger systems.
- Gauge tapping in available as specified with the order.

**Screens**

MODEL	SIZES	STANDARD (WATER)		STEAM RECOMMENDATION	
		MATERIAL	OPENING	MATERIAL	OPENING
All	½" - 4"	304SS	.062 perf	304SS	.033 perf
All	5" and Up	304SS	.125 perf	304SS	.062 perf

**NOTICE**

The information contained herein is not intended to replace the full product installation and safety information available or the experience of a trained product installer. You are required to thoroughly read all installation instructions and product safety information before beginning the installation of this product.

**\*The wetted surface of this product contacted by consumable water contains less than 0.25% of lead by weight.**

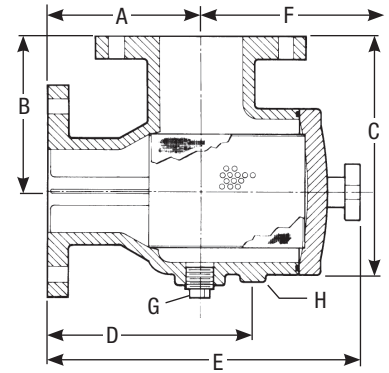
Mueller Steam Specialty product specifications in U.S. customary units and metric are approximate and are provided for reference only. For precise measurements, please contact Mueller Steam Specialty Technical Service. Mueller Steam Specialty reserves the right to change or modify product design, construction, specifications, or materials without prior notice and without incurring any obligation to make such changes and modifications on Mueller Steam Specialty products previously or subsequently sold.

**Mueller** Steam Specialty™

**A WATTS Brand**

# Dimensions and Weights

SIZE		DIMENSIONS								WEIGHT									
Inlet x Outlet in. mm	mm	A		B		C		D		E		F Screen Removal		G NPT		H Pipe Support I.D.		lbs.	kgs.
		in.	mm	in.	mm	in.	mm	in.	mm	in.	mm	in.	mm	in.	mm	in.	mm		
<b>1011</b>																			
2x1¼	50x32	4½	114	4½	114	6¼	170	6¼	156	10¾	259	8¼	224	¾	20	.824	21	19	9
2x1½	50x40	4½	114	4½	114	6¼	170	6¼	156	10¾	259	8¼	224	¾	20	.824	21	21	10
2x2	50x50	4½	114	4½	114	6¼	170	6¼	156	10¾	259	8¼	224	¾	20	.824	21	23	10
2½x2	65x50	5	127	5	127	7½	191	6¾	167	10⅞	276	9½	232	¾	20	1.049	27	32	15
2½x2½	65x65	5	127	5	127	7½	191	6¾	167	10⅞	276	9½	232	¾	20	1.049	27	34	15
3x2	80x50	5½	140	5½	140	8½	214	7¼	179	11⅞	294	9½	244	¾	20	1.049	27	45	20
3x2½	80x65	5½	140	5½	140	8½	214	7¼	179	11⅞	294	9½	244	¾	20	1.049	27	46	21
3x3	80x80	5½	140	5½	140	8½	214	7¼	179	11⅞	294	9½	244	¾	20	1.049	27	47	21
4x3	100x80	6½	165	6½	165	10¼	260	8¾	222	13¾	333	11½	292	1	25	1.380	35	71	44
4x4	100x100	6½	165	6½	165	10¼	260	8¾	222	13¾	333	11½	292	1	25	1.380	35	73	33
5x4	125x100	7½	191	7½	191	11½	278	10	254	15¾	400	14⅞	378	1	25	1.380	35	96	34
5x5	125x125	7½	191	7½	191	11½	278	10	254	15¾	400	14⅞	378	1	25	1.380	35	101	46
6x4	150x100	8	203	8	203	13¾	346	10½	267	16⅞	429	16⅞	421	1	25	1.380	35	132	60
6x5	150x125	8	203	8	203	13¾	346	10½	267	16⅞	429	16⅞	421	1	25	1.380	35	136	62
6x6	150x150	8	203	8	203	13¾	346	10½	267	16⅞	429	16⅞	421	1	25	1.380	35	139	63
8x6	200x150	9	229	9	229	14¾	372	11½	292	17⅞	454	16⅞	429	1	25	1.380	35	166	75
8x8	200x200	9	229	9	229	15½	402	11¾	298	20¾	527	22⅞	581	1¼	32	1.380	35	249	113
10x8	250x200	9	229	11	279	17½	453	11¾	298	20¾	527	22⅞	581	1¼	32	1.380	35	276	125
10x10	250x250	11	279	11	279	19¾	492	14	357	26¾	670	30¼	768	1¼	32	2.067	53	422	191
12x8	300x200	9	229	12	305	18¾	467	11¾	298	20¾	527	22⅞	581	1¼	32	1.380	35	412	187
12x10	300x250	11	279	12	305	20¾	518	14	357	26¾	670	33	838	1¼	32	2.067	53	491	223
12x12	300x300	12	305	12	305	21½	541	15¼	387	26¾	665	28¾	730	1¼	32	2.067	53	573	260
14x10	350x250	11	279	14	356	22½	571	14	357	26¾	670	33	838	1¼	32	2.067	53	507	230
14x12	350x300	12	305	14	356	23¾	594	15¼	387	26¾	665	31	787	1¼	32	2.067	53	601	273
14x14	350x350	14	356	14	356	25	635	17½	445	28	711	33¾	841	2	51	2.067	53	706	320
16x12	400x300	12	305	15	381	24¾	619	15¼	387	26¾	665	28¾	730	1¼	32	2.067	53	660	299
16x14	400x350	14	356	15	381	26	660	17½	445	27⅞	708	31	787	2	51	2.067	53	750	340
16x16	400x400	14½	357	14½	357	24½	633	17¾	446	27¾	706	33¾	841	2	51	2.067	53	820	372
18x12	450x300	12	305	16½	419	25¾	657	15¼	387	25¾	644	28¾	730	1¼	32	2.067	53	—	—
<b>1012</b>																			
2x2	50x50	4¾	121	4¾	121	6½	176	6¾	162	10⅞	265	8¼	351	¾	20	.824	21	30	14
2½x2	65x50	5¼	133	5½	135	7¼	198	6¾	173	11½	283	9½	232	¾	20	1.380	35	35	16
2½x2½	65x65	5½	135	5½	149	7¼	198	6¾	175	11½	284	9½	232	¾	20	1.380	35	39	18
3x2	80x50	5¾	146	5¾	149	8¼	224	7¾	194	11¾	300	9½	244	¾	20	1.380	35	57	26
3x2½	80x65	5¾	146	5¾	149	8¼	224	7¾	194	11¾	300	9½	244	¾	20	1.380	35	59	27
3x3	80x80	5¾	149	5¾	149	8¼	224	7¾	197	11¾	303	9½	244	¾	20	1.380	35	63	29
4x3	100x80	6¼	170	6¼	173	10⅞	265	8½	227	13½	354	11½	292	1	25	1.380	35	79	36
4x4	100x100	6¼	173	6¼	173	10⅞	265	8½	252	13½	341	11½	292	1	25	1.380	35	86	39
6x4	150x100	8½	211	8½	216	13¼	351	10¾	275	17¾	437	16⅞	421	1	25	1.380	35	161	73
6x5	150x125	8½	214	8½	216	13¼	351	10¾	278	17¾	440	16⅞	421	1	25	1.380	35	165	75
6x6	150x150	8½	214	8½	216	13¼	351	10¾	278	17¾	440	16⅞	421	1	25	1.380	35	168	76
8x6	200x150	9½	240	10	254	15¾	389	11¾	303	18¾	465	16⅞	429	1	25	1.380	35	216	98
8x8	200x200	9½	241	10	254	16¾	425	12½	313	21½	541	22⅞	581	1¼	32	1.380	35	317	144
10x8	250x200	9½	241	11¼	298	18¾	468	12½	313	21½	541	22⅞	581	1¼	32	1.380	35	358	163
10x10	250x250	11¾	298	11¾	298	20	508	14¾	375	27½	689	30¼	768	1¼	32	1.380	35	473	215
12x10	300x250	11¾	298	12¾	327	21½	537	14¾	375	27½	689	33	838	1¼	32	1.380	35	524	237



Models 1011, 1012

**Limited Warranty:** Mueller Steam Specialty warrants each product to be free from defects in material and workmanship under normal usage for a period of one year from the date of original shipment. In the event of such defects within the warranty period, the Company will, at its option, replace or recondition the product without charge. This shall constitute the sole and exclusive remedy for breach of warranty, and the Company shall not be responsible for any incidental, special or consequential damages, including without limitation, lost profits or the cost of repairing or replacing other property which is damaged if this product does not work properly, other costs resulting from labor charges, delays, vandalism, negligence, fouling caused by foreign material, damage from adverse water conditions, chemical, or any other circumstances over which the Company has no control. This warranty shall be invalidated by any abuse, misuse, misapplication or improper installation of the product. **THIS WARRANTY IS IN LIEU OF ALL OTHER WARRANTIES, EXPRESS OR IMPLIED, INCLUDING ANY IMPLIED WARRANTIES OF MERCHANTABILITY OR FITNESS FOR A PARTICULAR PURPOSE.** Any implied warranties that are imposed by law are limited in duration to one year.

Some States do not allow limitations on how long an implied warranty lasts, and some States do not allow the exclusion or limitation of incidental or consequential damages. Therefore the above limitations may not apply to you. This Limited Warranty gives you specific legal rights, and you may have other rights that vary from State to State. You should consult applicable state laws to determine your rights.



**A WATTS Brand**

USA: T: (800) 334-6259 • F: (800) 421-6772 • MuellerSteam.com

Latin America: T: (52) 81-1001-8600 • MuellerSteam.com