

MCX

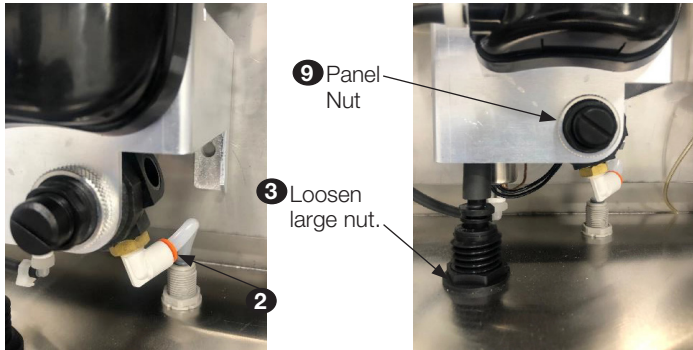
Replacing the Heater (Kit #28172S)

To replace the heater in the MCX instrument: Warning electrical shock.

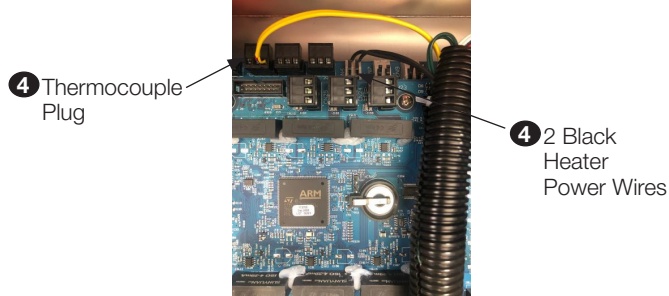
WARNING

Electrical shock.

1. Turn off water to the MCX instrument.

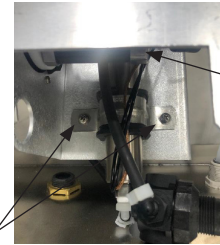


2. Disconnect the water inlet tube (orange) from the pressure regulator.
3. Loosen large nut completely from inside of the enclosure holding drain line in place, then remove drain from bottom of enclosure by releasing the push-to-connect fitting.
4. Disconnect thermocouple plug and the two black heater power wires that are located on the main measurement board in the electronics

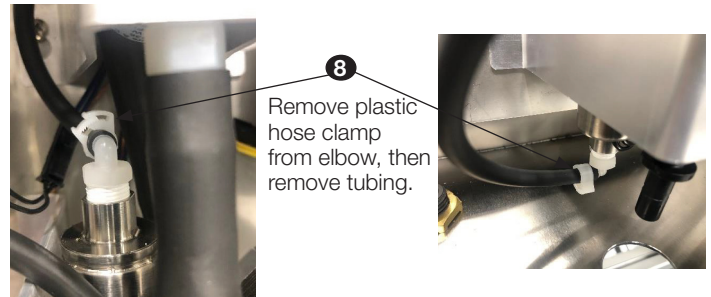


compartment. These wires will need to be removed from the inside of the corrugated sleeving. Make note of plug & wire location and orientation.

5. Remove the red & yellow wires from connector. Take note of the proper orientation/placement of these wires in the connector. See Main UI Board image in Low Voltage Connections section of this manual for wire locations.
6. Loosen the screws to the bracket that holds the intake assembly to the back panel.
7. Lift intake assembly up and off of mounting screws, turning it over to allow for easier access.



8. Remove plastic hose clamps from 90° elbows, then remove tubing from the elbows.
10. Loosen screws



9. Remove the panel nut that holds the regulator in place, then lower the regulator down through the bracket.
10. Loosen the 2 screws that hold the heater mounting clamp in place.
11. Slide the heater and connected wiring out of the clamp. Make sure to observe the orientation and position of the heater prior to removal.
12. Insert new heater into the clamp, making sure the flow direction and orientation is the same as the old one removed in Step 11.
13. Tighten the 2 screws that go to the heater mounting clamp, making sure heater is secure.
14. Connect tubing to the inlet and outlet elbows on heater, then secure with new clamps provided.
15. Turn intake assembly back over and place it back on the 2 screws that hold it to the back panel. Tighten screws once assembly is in place.
16. Place the regulator back into the bracket and secure into place with panel nut.
17. Reconnect the water line and the drain line that was removed in Steps 2 & 3.
18. Route new wiring through corrugated sleeving into the electronics compartment.
19. Reconnect the red & yellow thermocouple wires to the connector, then plug back into the main measurement board, making sure of proper orientation/placement of the connector and wires.
20. Reconnect the two black heater wires to the main measurement board.
21. Turn water supply to MCX instrument back on.
22. Turn MCX instrument on and check for leaks.



A WATTS Brand