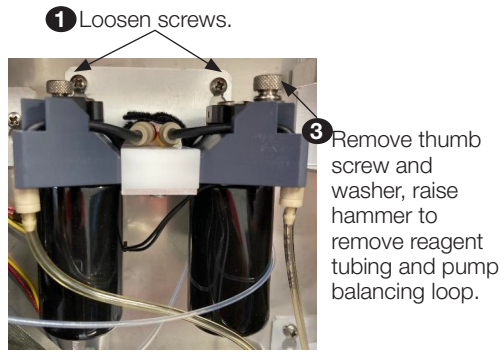


MCX

Replacing the Reagent Pump (Kit #28181S)

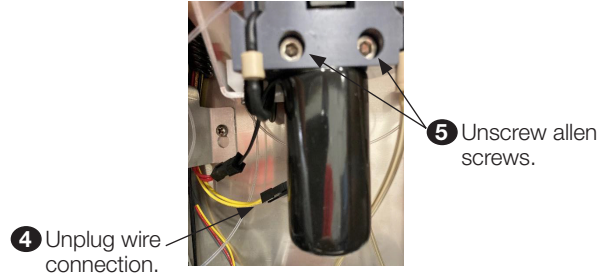
To replace the reagent pump on the MCX instrument:

1. Loosen the 2 screws that hold the reagent pump bracket to the back panel.



2. Lift the bracket assembly off of the screws.
3. Remove thumb screw and washer raise pump hammer to allow reagent tubing and pump balancing loop to be removed from under pump hammer.
4. Unplug the wire connection from the reagent pump. Note that the color of the wire in which the pump is connected to is associated to the color of the plastic fitting and the chemical solution that is used with that pump.

5. Unscrew the 2 allen screws holding the reagent pump to the mounting block.



6. Install new reagent pump to the mounting block using the 2 screws removed in Step 5.
7. Plug wire connections into new reagent pump.
8. Place reagent tubing and pump balancing loop under pump hammer, making sure to place the check valve and connector into their respective grooves. Then reinstall the washer and thumb screw.
9. Screw the reagent pump bracket to the back panel using the 2 screws that were loosened in Step 1.
10. Turn instrument on.

