

Job Name _____

Contractor _____

Job Location _____

Approval _____

Engineer _____

Contractor's P.O. No. _____

Approval _____

Representative _____

LEAD FREE*

Series Ames Spool and Flanges

Make Up Spools and Flanges For Backflow Preventers

Sizes: 2½"-10"

Ames "Make Up" Spools are used when retrofitting a backflow preventer into an installation where an existing backflow preventer is being replaced.

Ames "Make Up" Flanges are used in piping applications where there is a need for additional fitting lay length.

Features

- Extremely Compact Design
- 70% Lighter than Traditional Designs
- 304 (Schedule 40) Stainless Steel Housing & Sleeve
- Groove Fittings Allow Integral Pipeline Adjustment
- Patented Link Check Provides Lowest Pressure Loss
- Unmatched Ease of Serviceability
- Available with Grooved Butterfly Valve Shutoffs
- Available for Horizontal or N Pattern Installations
- Replaceable Check Disc Rubber

Models

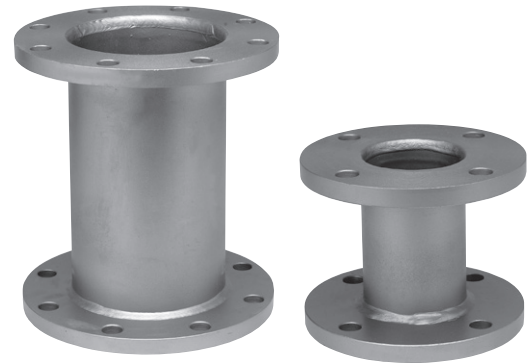
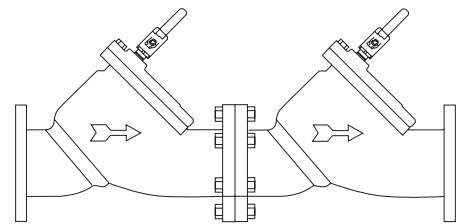
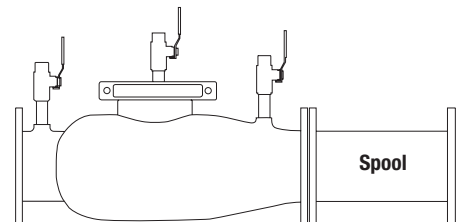
Spool - Make Up Spools

Available in Lightweight 300 series Stainless Steel or Epoxy coated Carbon Steel. AWWA 150# class "D" Carbon Steel Flanges offered as standard. 150# class "D" Stainless Steel Flanges upon special request.

Flanges - Make Up Flanges

AWWA 150# modified class "D" Zinc plated Carbon Steel Flanges with standard bolt pattern. 150# modified class "D" Zinc Plated Carbon Steel Flanges with standard pattern slotted. 150# modified class "D" Stainless Steel Flanges with standard bolt pattern.

Contact factory for specific applications.

**Spools****Ames 2000CIV****Ames 2000SS**

NOTICE

The information contained herein is not intended to replace the full product installation and safety information available or the experience of a trained product installer. You are required to thoroughly read all installation instructions and product safety information before beginning the installation of this product.

*The wetted surface of this product contacted by consumable water contains less than 0.25% of lead by weight.

Ames Fire & Waterworks product specifications in U.S. customary units and metric are approximate and are provided for reference only. For precise measurements, please contact Ames Fire & Waterworks Technical Service. Ames Fire & Waterworks reserves the right to change or modify product design, construction, specifications, or materials without prior notice and without incurring any obligation to make such changes and modifications on Ames Fire & Waterworks products previously or subsequently sold.



How to order

Locate the manufacturer and model number under the valve size column in the matrix on these two pages. It is assumed that the valve you will be installing is a Ames 2000SS SilverBullet™ Series. On the first line across from the model number is the lay length of the valve less gates. On the lines listed below is the valve being replaced. On that line is the lay length of that valve. The column to the right is the length of the spool needed to “make up” the difference between the valve being replaced and the lay length of the “SilverBullet™ Series.” Below the spool length is the ordering code for that spool.

Retrofit Spool Pieces for Various Lengths • Ames Products vs Ames SilverBullet™ Series

AMES MODEL	2½**	ACTUAL SPOOL LENGTH NEEDED	3**	ACTUAL SPOOL LENGTH NEEDED	4**	ACTUAL SPOOL LENGTH NEEDED	6**	ACTUAL SPOOL LENGTH NEEDED	8**	ACTUAL SPOOL LENGTH NEEDED	10**	ACTUAL SPOOL LENGTH NEEDED
2000SS	22"	-	22"	-	22"	-	27½"	-	29½"	-	29½"	-
2000CIV	24"	1⅞"	24"	1⅞"	34"	11⅞"	42½"	14⅞"	52"	22⅜"	64"	34⅜"
3000SS	22"	-	22"	-	22"	-	27½"	-	29½"	-	29½"	-
3000CIV	-	-	24"	1⅞"	34"	11⅞"	41½"	13⅞"	52"	22⅜"	64"	34⅜"
4000SS	22"	-	22"	-	22"	-	27½"	-	29½"	-	29½"	-
4000CIV	26⅞"	4"	26⅞"	4"	37"	14⅞"	44½"	16⅞"	55¼"	25⅝"	67⅜"	37¾"
5000SS	22"	-	22"	-	22"	-	27½"	-	-	-	-	-
5000CIV	26⅞"	4"	26⅞"	4"	37"	14⅞"	44½"	16⅞"	55¼"	-	67⅜"	-

*Size and length of valve being replaced.

Spool Sizes and Lengths

VALVE SIZE	ORDERING CODE	LENGTH	SPOOL SIZE	MODEL
2½"	7017187	1⅞"	2½" x 1⅞"	SPOOL
	7017188	3⅜"	2½" x 3⅜"	SPOOL
	7017189	2⅝⅙"	2½" x 3⅝⅙"	SPOOL
	7017190	4"	2½" x 4"	SPOOL
	7017191	4⅝⅙"	2½" x 4⅝⅙"	SPOOL
3"	7017192	1⅞"	3" x 1⅞"	SPOOL
	7017193	2½"	3" x 2½"	SPOOL
	7017194	3½"	3" x 3½"	SPOOL
	7017195	3⅝⅙"	3" x 3⅝⅙"	SPOOL
	7017196	4"	3" x 4"	SPOOL
4"	7017197	5⅜"	4" x 5⅜"	SPOOL
	7017198	5⅞"	4" x 5⅞"	SPOOL
	7017199	6⅞"	4" x 6⅞"	SPOOL
	7017200	6⅝⅙"	4" x 6⅝⅙"	SPOOL
	7017201	7⅜"	4" x 7⅜"	SPOOL
	7017202	7⅝⅙"	4" x 7⅝⅙"	SPOOL
	7017203	8"	4" x 8"	SPOOL
	7017204	9⅞"	4" x 9⅞"	SPOOL
	7017205	10¼"	4" x 10¼"	SPOOL
	7017206	10⅞"	4" x 10⅞"	SPOOL
	7017207	11⅞"	4" x 11⅞"	SPOOL
	7017208	12"	4" x 12"	SPOOL
6"	7017209	14⅞"	4" x 14⅞"	SPOOL
	7017210	5⅞"	6" x 5⅞"	SPOOL
	7017211	8⅞"	6" x 8⅞"	SPOOL
	7017212	9⅝⅙"	6" x 9⅝⅙"	SPOOL
	7017213	10¼"	6" x 10¼"	SPOOL
	7017214	11"	6" x 11"	SPOOL
	7017215	12⅝⅙"	6" x 12⅝⅙"	SPOOL
	7017216	12½"	6" x 12½"	SPOOL
	7017217	13⅜"	6" x 13⅜"	SPOOL
	7017218	13⅞"	6" x 13⅞"	SPOOL
	7017219	14"	6" x 14"	SPOOL
	7017220	14⅜"	6" x 14⅜"	SPOOL
	7017221	14⅞"	6" x 14⅞"	SPOOL
	7017222	16⅞"	6" x 16⅞"	SPOOL
	7017223	17⅜"	6" x 17⅜"	SPOOL

VALVE SIZE	ORDERING CODE	LENGTH	SPOOL SIZE	MODEL	
8"	7017224	12⅞"	8" x 12⅞"	SPOOL	
	7017225	16⅞"	8" x 16⅞"	SPOOL	
	7017226	16½"	8" x 16½"	SPOOL	
	7017227	17⅜"	8" x 17⅜"	SPOOL	
	7017228	18⅜"	8" x 18⅜"	SPOOL	
	7017229	21⅝⅙"	8" x 21⅝⅙"	SPOOL	
	7017230	21⅞"	8" x 21⅞"	SPOOL	
	7017231	22⅜"	8" x 22⅜"	SPOOL	
	7017232	22⅞"	8" x 22⅞"	SPOOL	
	7017233	23⅜"	8" x 23⅜"	SPOOL	
	7017234	25⅝"	8" x 25⅝"	SPOOL	
	10"	7017235	16⅞"	10" x 16⅞"	SPOOL
		7017236	16¾"	10" x 16¾"	SPOOL
		7017237	28⅝"	10" x 28⅝"	SPOOL
		7017238	28⅞"	10" x 28⅞"	SPOOL
7017239		28½"	10" x 28½"	SPOOL	
7017240		29⅞"	10" x 29⅞"	SPOOL	
7017241		29⅝⅙"	10" x 29⅝⅙"	SPOOL	
7017242		32⅜"	10" x 32⅜"	SPOOL	
7017243		32⅝⅙"	10" x 32⅝⅙"	SPOOL	
7017244		34⅜"	10" x 34⅜"	SPOOL	
7017245	37¾"	10" x 37¾"	SPOOL		

Size = Valve Size x Spool Length

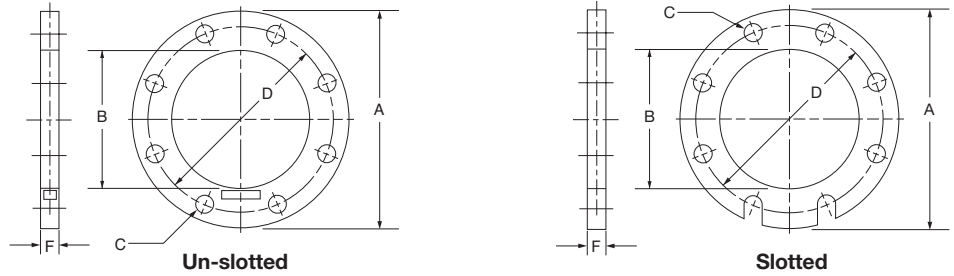
Please be advised that due to variations in manufacturing tolerances, the measurements listed can vary from what is installed. Please verify the measurements of the valve being replaced. Custom lay lengths available upon request.

"Make Up" Flanges

Available Thickness

1/4" & 1/2" Stainless Steel

1/2" & 1" Zinc Plated
Carbon Steel



AWWA C207 Modified Class D Spacer Flanges

SIZE	STD.	MODEL	ORDERING CODE	A	B	C	D	E	F	COMMENTS
				FLG. OD +/-1/8	FLG. ID +1/16 -0	BOLT HOLE SIZE	BOLT CIRCLE +/-1/16	NO. HOLES	THICKNESS +/-1/8	
2"	AWWA D	FLG SS-U	7017157	6"	2.44"	3/4"	4 3/4"	4	1/4"	UN-SLOTTED
2"	AWWA D	FLG SS-U	7017158	6"	2.44"	3/4"	4 3/4"	4	1/2"	UN-SLOTTED
2"	AWWA D	FLG SS-S	7017171	6"	2.44"	3/4"	4 3/4"	4	1/4"	SLOTTED
2"	AWWA D	FLG SS-S	7017172	6"	2.44"	3/4"	4 3/4"	4	1/2"	SLOTTED
2 1/2"	AWWA D	FLG SS-U	7017159	7"	2.94"	3/4"	5 1/2"	4	1/4"	UN-SLOTTED
2 1/2"	AWWA D	FLG SS-U	7017160	7"	2.94"	3/4"	5 1/2"	4	1/2"	UN-SLOTTED
2 1/2"	AWWA D	FLG SS-S	7017173	7"	2.94"	3/4"	5 1/2"	4	1/4"	SLOTTED
2 1/2"	AWWA D	FLG SS-S	7017174	7"	2.94"	3/4"	5 1/2"	4	1/2"	SLOTTED
3"	AWWA D	FLG Z-U	0107068	7 1/2"	3.57"	3/4"	6"	4	1/2"	UN-SLOTTED
3"	AWWA D	FLG Z-U	0107069	7 1/2"	3.57"	3/4"	6"	4	1"	UN-SLOTTED
3"	AWWA D	FLG Z-S	0107070	7 1/2"	3.57"	3/4"	6"	4	1/2"	SLOTTED
3"	AWWA D	FLG Z-S	0107071	7 1/2"	3.57"	3/4"	6"	4	1"	SLOTTED
3"	AWWA D	FLG SS-U	7017161	7 1/2"	3.57"	3/4"	6"	4	1/4"	UN-SLOTTED
3"	AWWA D	FLG SS-U	7017162	7 1/2"	3.57"	3/4"	6"	4	1/2"	UN-SLOTTED
3"	AWWA D	FLG SS-S	7017175	7 1/2"	3.57"	3/4"	6"	4	1/4"	SLOTTED
3"	AWWA D	FLG SS-S	7017176	7 1/2"	3.57"	3/4"	6"	4	1/2"	SLOTTED
4"	AWWA D	FLG Z-U	0107076	9"	4.57"	3/4"	7 1/2"	8	1/2"	UN-SLOTTED
4"	AWWA D	FLG Z-U	0107077	9"	4.57"	3/4"	7 1/2"	8	1"	UN-SLOTTED
4"	AWWA D	FLG Z-S	0107078	9"	4.57"	3/4"	7 1/2"	8	1/2"	SLOTTED
4"	AWWA D	FLG Z-S	0107079	9"	4.57"	3/4"	7 1/2"	8	1"	SLOTTED
4"	AWWA D	FLG SS-U	7017163	9"	4.57"	3/4"	7 1/2"	8	1/4"	UN-SLOTTED
4"	AWWA D	FLG SS-U	7017164	9"	4.57"	3/4"	7 1/2"	8	1/2"	UN-SLOTTED
4"	AWWA D	FLG SS-S	7017177	9"	4.57"	3/4"	7 1/2"	8	1/4"	SLOTTED
4"	AWWA D	FLG SS-S	7017178	9"	4.57"	3/4"	7 1/2"	8	1/2"	SLOTTED
6"	AWWA D	FLG Z-U	0107084	11"	6.72"	7/8"	9 1/2"	8	1/2"	UN-SLOTTED
6"	AWWA D	FLG Z-U	0107085	11"	6.72"	7/8"	9 1/2"	8	1"	UN-SLOTTED
6"	AWWA D	FLG Z-S	0107086	11"	6.72"	7/8"	9 1/2"	8	1/2"	SLOTTED
6"	AWWA D	FLG Z-S	0107087	11"	6.72"	7/8"	9 1/2"	8	1"	SLOTTED
6"	AWWA D	FLG SS-U	7017165	11"	6.72"	7/8"	9 1/2"	8	1/4"	UN-SLOTTED
6"	AWWA D	FLG SS-U	7017166	11"	6.72"	7/8"	9 1/2"	8	1/2"	UN-SLOTTED
6"	AWWA D	FLG SS-S	7017179	11"	6.72"	7/8"	9 1/2"	8	1/4"	SLOTTED
6"	AWWA D	FLG SS-S	7017180	11"	6.72"	7/8"	9 1/2"	8	1/2"	SLOTTED
8"	AWWA D	FLG Z-U	0107092	13 1/2"	8.72"	7/8"	11 3/4"	8	1/2"	UN-SLOTTED
8"	AWWA D	FLG Z-U	0107093	13 1/2"	8.72"	7/8"	11 3/4"	8	1"	UN-SLOTTED
8"	AWWA D	FLG Z-S	0107094	13 1/2"	8.72"	7/8"	11 3/4"	8	1/2"	SLOTTED
8"	AWWA D	FLG Z-S	0107095	13 1/2"	8.72"	7/8"	11 3/4"	8	1"	SLOTTED
8"	AWWA D	FLG SS-U	7017167	13 1/2"	8.72"	7/8"	11 3/4"	8	1/4"	UN-SLOTTED
8"	AWWA D	FLG SS-U	7017168	13 1/2"	8.72"	7/8"	11 3/4"	8	1/2"	UN-SLOTTED
8"	AWWA D	FLG SS-S	7017182	13 1/2"	8.72"	7/8"	11 3/4"	8	1/4"	SLOTTED
8"	AWWA D	FLG SS-S	7017182	13 1/2"	8.72"	7/8"	11 3/4"	8	1/2"	SLOTTED
10"	AWWA D	FLG SS-U	7017169	16"	10.81"	1"	14 1/4"	12	1/4"	UN-SLOTTED
10"	AWWA D	FLG SS-U	7017170	16"	10.81"	1"	14 1/4"	12	1/2"	UN-SLOTTED
10"	AWWA D	FLG SS-S	7017183	16"	10.81"	1"	14 1/4"	12	1/4"	SLOTTED
10"	AWWA D	FLG SS-S	7017184	16"	10.81"	1"	14 1/4"	12	1/2"	SLOTTED

Matrix: Z = Zinc S = Slotted SS = 304 Stainless Steel U = Un-slotted Size = Valve Size x Thickness

For additional information, visit our web site at: www.amesfirewater.com



A WATTS Brand