

POWERS

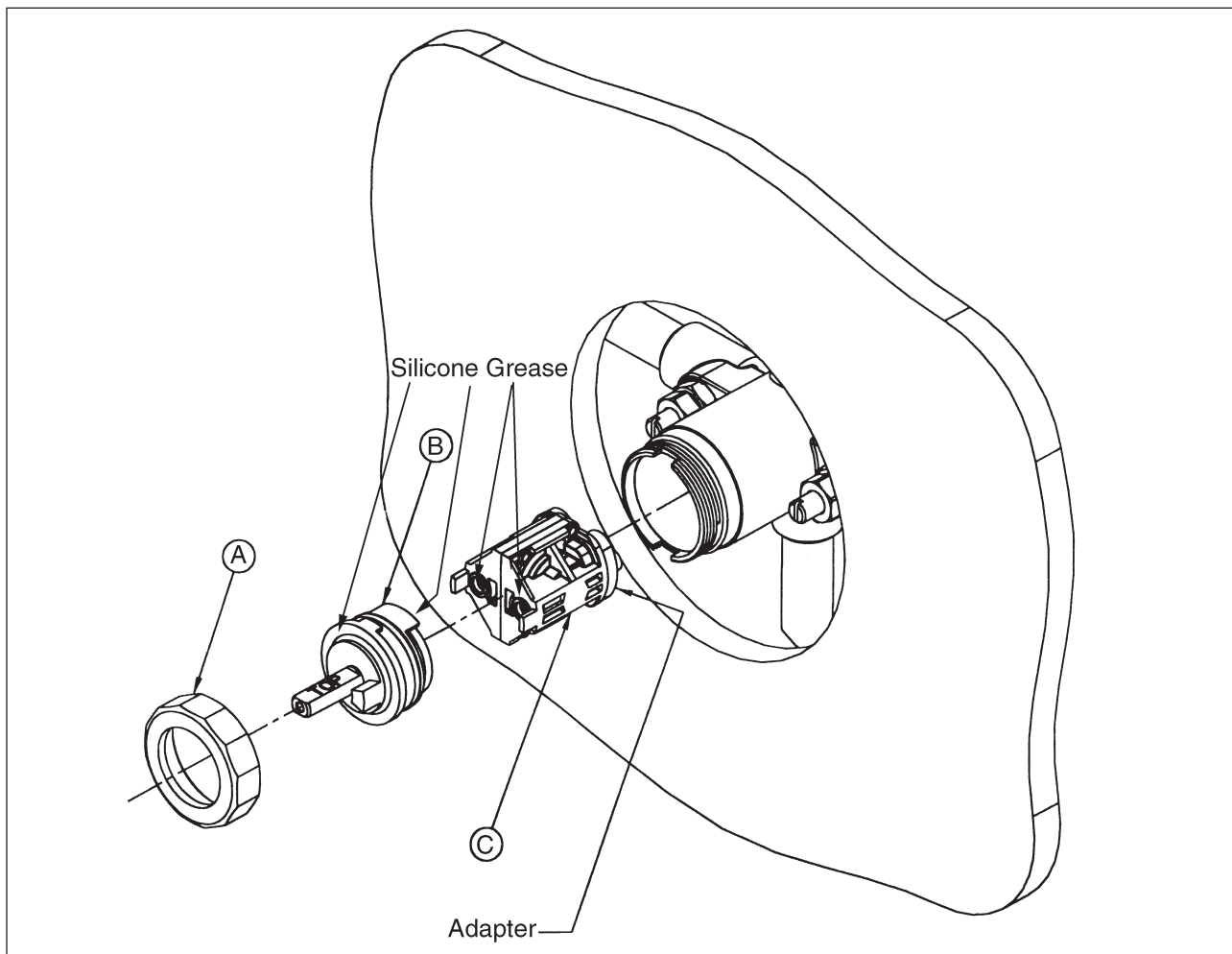
A WATTS INDUSTRIES CO.

INSTALLATION INSTRUCTIONS

**BILTMORE SERIES 900
Pressure Balancing Valves**

TO INSTALL

1. Remove "A" (Bonnet nut) and "B" (Bonnet assembly).
2. Remove old cartridge "C".
3. Apply Silicone Grease to areas indicated by the arrows.
4. Place adapters onto back of cartridge.
5. Place "C" (Cartridge assembly) into valve body. Be careful to align adapters with holes in the body.
6. Replace "B" (Bonnet assembly). *Note that the word "TOP" is stamped into the stem.* Make sure the word "TOP" is facing upward.
7. Replace "A" (Bonnet nut).

**CALIFORNIA PROPOSITION 65 WARNING**

WARNING: This product contains chemicals known to the State of California to cause cancer and birth defects or other reproductive harm. (Installer: California law requires that this warning be given to the consumer.)

For more information: www.wattsind.com/prop65

POWERS

A WATTS INDUSTRIES CO.

© July 2000 Powers Powers, a Watts Industries Co.

3400 Oakton Street, Skokie, IL 60076 Phone: 800.669.5430 • 847.673.6700 • Fax: 847.673.9044

www.powerscontrols.com

5435 North Service Road, Burlington, Ontario, L7L 5H7 Canada • Phone: 888.208.8927 • Fax: 888.882.1979