

For Residential and Commercial Applications

Job Name _____

Contractor _____

Job Location _____

Approval _____

Engineer _____

Contractor's P.O. No. _____

Approval _____

Representative _____

Series 35 Quick-Connect Accessories

Watts Quick-Connect Collet Clips, Cone Seals and O-Ring assemblies are designed and manufactured for many years of trouble free service. Produced of off white Polysulfone, a high performance thermal plastic material, the Watts Quick-Connect design allows for quick and easy connections without the use of installation tools.

Specifications

Connection shall be made using Watts Series 35 Quick-Connect fitting with Integral Collet and O-Ring guide. Fitting shall be able to fully rotate under pressure and allow for easy disconnect and reuse without the use of disconnection tools. Fitting must not disassemble to disconnect.

Approvals

NSF-61, NSF-14, CSA B137.5, ASTM F877, UPC

Ratings

100psi @ 180°F (6.8 bar @ 82°C)

250psi @ 75°F (17.3 bar @ 24°C)

Example

3547-08

35 = Series 35 47 = Type 47 Collet Clip

08 = 3/8" CTS

Caution: The polysulfone material used in the Quick-Connect fittings can be compromised by exposure to volatile organic compounds (VOC's) and caustic chemicals. Therefore, **DO NOT** expose this product to any such chemical or foreign substance, which would include exposure to the following products: **Pipe Dopes (thread sealants)**, bug sprays, lubricants, cleaners, paints, bleaches, acids, solder fluxes, plastic piping primers and cements, oxidizing agents, alkaline solutions, thinners, fuels, oil based caulks, hydrocarbons, spray foam or foaming agents (insulation).



3547



161



35159



163

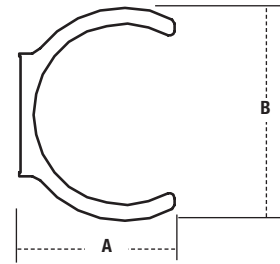


162

Dimensions – Weights – Weight and Dimensions are approximate (tolerance +/- 1/8)

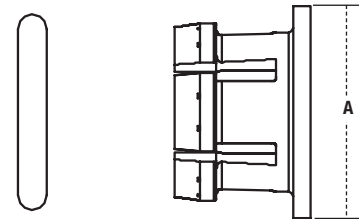
Type 47 Collet Clips

MODEL	SIZE & CONNECTION	ITEM LENGTH		ITEM HEIGHT		ITEM WEIGHT	
		in.	mm	in.	mm	oz.	gr.
Package Type: Bulk							
3547-08	3/8" CTS	3/4	19	3/4	19	0.01	.28
3547-10	1/2" CTS	15/16	24	15/16	21	0.02	.57
3547-14	3/4" CTS	1 1/4	32	1 1/8	29	0.03	.85
3547-18	1" CTS	1 1/2	38	1 1/4	32	0.07	1.98
Package Type: Poly Bag							
3547B-08	3/8" CTS	3/4	19	3/4	19	0.01	.28
3547B-10	1/2" CTS	15/16	24	15/16	21	0.02	.57
3547B-14	3/4" CTS	1 1/4	32	1 1/8	29	0.03	.85
3547B-18	1" CTS	1 1/2	38	1 1/4	32	0.07	1.98



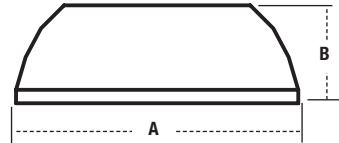
Type 159 O-Ring Assembly

MODEL	SIZE & CONNECTION	ITEM WIDTH		ITEM WEIGHT	
		in.	mm	oz.	gr.
Package Type: Bulk					
35159-08	3/8" CTS	3/4	19	0.1	.28
35159-10	1/2" CTS	15/16	24	0.1	.28
35159-14	3/4" CTS	1 1/8	29	0.1	.28
35159-18	1" CTS	1 7/16		0.2	.57
Package Type: Poly Bag					
35159B-08	3/8" CTS	3/4	19	0.1	.28
35159B-10	1/2" CTS	15/16	24	0.1	.28
35159B-14	3/4" CTS	1 1/8	29	0.1	.28
35159B-18	1" CTS	1 7/16		0.2	.57



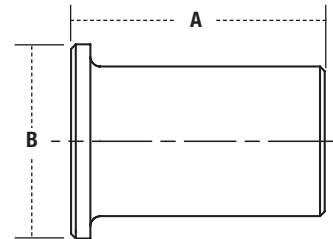
Type 161 Cone Seals

MODEL	SIZE & CONNECTION	ITEM LENGTH		ITEM HEIGHT		ITEM WEIGHT	
		in.	mm	in.	mm	oz.	gr.
Package Type: Bulk							
161-08	1/2" NPS	1 1/16	27	1/4	6	0.03	.85
161-12	3/4" NPSFGHT	7/8	22	3/8	10	0.04	1.13
Package Type: Poly Bag							
161B-08	1/2" NPS	1 1/16	27	1/4	6	0.03	.85
161B-12	3/4" NPSFGHT	7/8	22	3/8	10	0.04	1.13



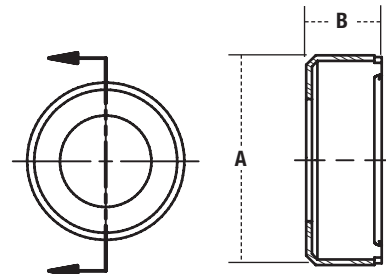
Type 162 Pipe Inserts

MODEL	SIZE	ITEM LENGTH		ITEM HEIGHT		ITEM WEIGHT	
		in.	mm	in.	mm	oz.	gr.
Package Type: Poly Bag							
162-10	1/2" CTS	13/16	21	5/8	16	.03	.85
162-14	3/4" CTS	15/16	24	7/8	22	.08	2.27
162-18	1" CTS	1	26	1 1/8	28	.11	3.12



Type 163 Collet Covers

MODEL	SIZE & CONNECTION	ITEM LENGTH		ITEM HEIGHT		ITEM WEIGHT	
		in.	mm	in.	mm	oz.	gr.
Package Type: Poly Bag							
163-10	1/2" CTS	1 1/16	27.8	3/8	10	.04	1.2
163-14	3/4" CTS	1 5/16	33.9	1/2	12.8	.04	1.2
163-18	1" CTS	1 1/8	42.0	1/2	12.8	.04	1.2



Watts product specifications in U.S. customary units and metric are approximate and are provided for reference only. For precise measurements, please contact Watts Technical Service. Watts reserves the right to change or modify product design, construction, specifications, or materials without prior notice and without incurring any obligation to make such changes and modifications on Watts products previously or subsequently sold.

Quick-Connect Plumbing Solutions

USA: 815 Chestnut St., No. Andover, MA 01845-6098; www.watts.com

Canada: 5435 North Service Rd., Burlington, ONT. L7L 5H7; www.wattscanada.ca

ES-QC-35Accessories 0710

© Watts Regulator Co., 2007