

## For Commercial, Residential & Institutional HVAC Applications

Job Name \_\_\_\_\_

Contractor \_\_\_\_\_

Job Location \_\_\_\_\_

Approval \_\_\_\_\_

Engineer \_\_\_\_\_

Contractor's P.O. No. \_\_\_\_\_

Approval \_\_\_\_\_

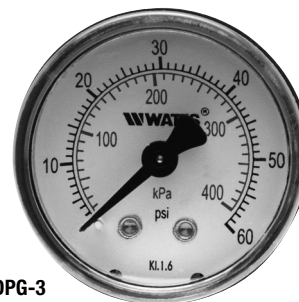
Representative \_\_\_\_\_

# Series DPG-3

## Center Back-Entry Pressure Gauges

**Dial Sizes: 1 1/2", 2", 2 1/2", 3" (40, 50, 65, 80mm)**

Series DPG-3 Center Back-Entry Pressure Gauges are used in commercial, residential, and institutional HVAC applications. They feature ABS polymer cases, Kostil Polymer windows, 1/8" (3mm) or 1/4" (8mm) NPT connections, and copper alloy Bourdon tube sensing elements. Accuracy is ASME, Type B. Series DPG-3 gauges are available in various pressure rating scales. The dual scale features PSI and kPa measurements.



DPG-3

### Features

- ABS polymer case
- Kostil polymer window
- Copper alloy Bourdon sensing element
- Tin alloy welding
- 1/8" (3mm) or 1/4" (8mm) NPT connections
- ASME Type "B" accuracy

### Approvals

Certified by The Northern Certification Society of Italy (Det Norske Verita Italia S.r.l.)

### Standards

ASME B40.100

### Temperature

Working Temperature: -4°F to 176°F (-20°C to 80°C)

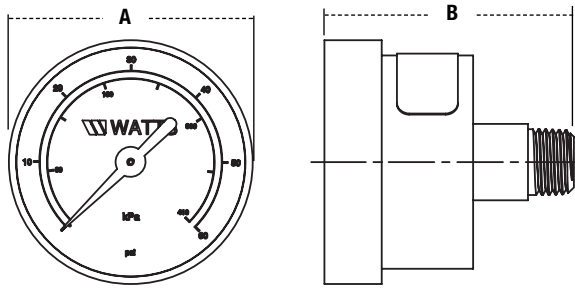
### Materials

<b>Case:</b>	ABS polymer
<b>Window:</b>	Kostil polymer
<b>Sensing Element:</b>	Copper alloy Bourdon tube
<b>Welding:</b>	Tin alloy

# WATTS®

Watts product specifications in U.S. customary units and metric are approximate and are provided for reference only. For precise measurements, please contact Watts Technical Service. Watts reserves the right to change or modify product design, construction, specifications, or materials without prior notice and without incurring any obligation to make such changes and modifications on Watts products previously or subsequently sold.

## Dimensions – Weights



MODEL	SCALE		SIZE (DN)		DIMENSIONS				WEIGHTS	
					A		B		lbs.	kgs.
					in.	mm	in.	mm		
DPG3-1½	0 – 60psi	413 kPa	⅛	3	1½	38	1 <sup>9</sup> / <sub>16</sub>	40	.1	.05
DPG3-1½	0 – 160psi	1103 kPa	⅛	3	1½	38	1 <sup>9</sup> / <sub>16</sub>	40	.1	.05
DPG3-2	0 – 15psi	103 kPa	¼	8	2	50	1 <sup>15</sup> / <sub>16</sub>	49	.2	.09
DPG3-2	0 – 30psi	207 kPa	¼	8	2	50	1 <sup>15</sup> / <sub>16</sub>	49	.2	.09
DPG3-2	0 – 60psi	413 kPa	¼	8	2	50	1 <sup>15</sup> / <sub>16</sub>	49	.2	.09
DPG3-2	0 – 100psi	689 kPa	¼	8	2	50	1 <sup>15</sup> / <sub>16</sub>	49	.2	.09
DPG3-2	0 – 160psi	1103 kPa	¼	8	2	50	1 <sup>15</sup> / <sub>16</sub>	49	.2	.09
DPG3-2	0 – 200psi	1379 kPa	¼	8	2	50	1 <sup>15</sup> / <sub>16</sub>	49	.2	.09
DPG3-2	0 – 300psi	2069 kPa	¼	8	2	50	1 <sup>15</sup> / <sub>16</sub>	49	.2	.09
DPG3-2½	0 – 15psi	103 kPa	¼	8	2½	63	1 <sup>15</sup> / <sub>16</sub>	49	.3	.14
DPG3-2½	0 – 30psi	207 kPa	¼	8	2½	63	1 <sup>15</sup> / <sub>16</sub>	49	.3	.14
DPG3-2½	0 – 60psi	413 kPa	¼	8	2½	63	1 <sup>15</sup> / <sub>16</sub>	49	.3	.14
DPG3-2½	0 – 100psi	689 kPa	¼	8	2½	63	1 <sup>15</sup> / <sub>16</sub>	49	.3	.14
DPG3-2½	0 – 160psi	1103 kPa	¼	8	2½	63	1 <sup>15</sup> / <sub>16</sub>	49	.3	.14
DPG3-2½	0 – 200psi	1379 kPa	¼	8	2½	63	1 <sup>15</sup> / <sub>16</sub>	49	.3	.14
DPG3-2½	0 – 300psi	2069 kPa	¼	8	2½	63	1 <sup>15</sup> / <sub>16</sub>	49	.3	.14
DPG3-3	0 – 15psi	103 kPa	¼	8	3	80	1 <sup>15</sup> / <sub>16</sub>	49	.4	.18
DPG3-3	0 – 30psi	207 kPa	¼	8	3	80	1 <sup>15</sup> / <sub>16</sub>	49	.4	.18
DPG3-3	0 – 60psi	413 kPa	¼	8	3	80	1 <sup>15</sup> / <sub>16</sub>	49	.4	.18
DPG3-3	0 – 100psi	689 kPa	¼	8	3	80	1 <sup>15</sup> / <sub>16</sub>	49	.4	.18
DPG3-3	0 – 160psi	1103 kPa	¼	8	3	80	1 <sup>15</sup> / <sub>16</sub>	49	.4	.18
DPG3-3	0 – 200psi	1379 kPa	¼	8	3	80	1 <sup>15</sup> / <sub>16</sub>	49	.4	.18
DPG3-3	0 – 300psi	2069 kPa	¼	8	3	80	1 <sup>15</sup> / <sub>16</sub>	49	.4	.18



Water Safety & Flow Control Products



USA: 815 Chestnut St., No. Andover, MA 01845-6098; www.watts.com

Canada: 5435 North Service Rd., Burlington, ONT. L7L 5H7; www.wattscanada.ca