

# Engineering Specification

Job Name _____	Contractor _____
Job Location _____	Approval _____
Engineer _____	Contractor's P.O. No. _____
Approval _____	Representative _____

## FD-370 Wood Deck Drain

### Specification

Watts FD-370 epoxy coated wood deck drain with 5" diameter heel proof aluminum grate and surface membrane clamp, recessed mounting flange, and 2" ABS socket outlet.



Call customer service if you need assistance with technical details.

Suffix	Options	Description
-6	Vandal Proof	

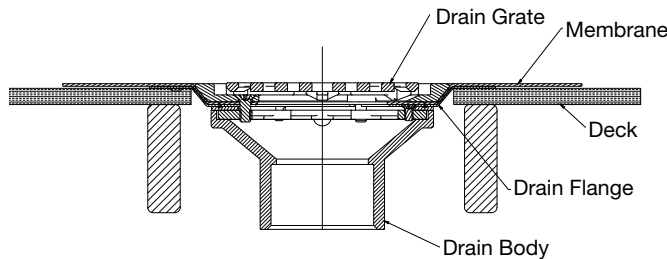
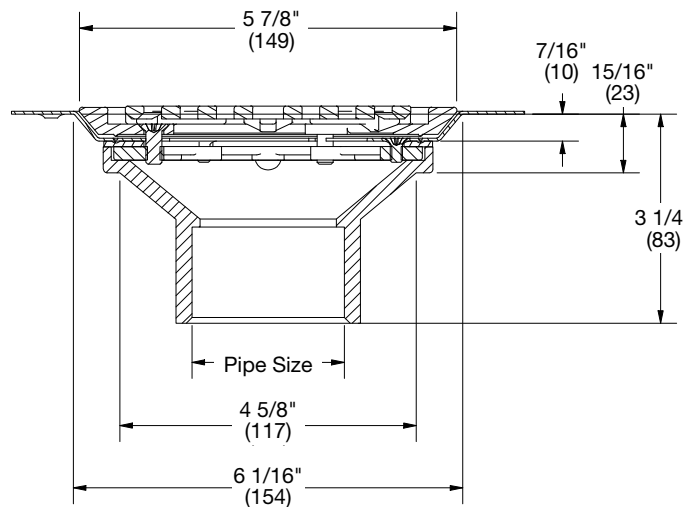
Load Rating	Free Area
Sq. In.	
LD	8

### NOTICE

The load classifications are in accordance with the American National Standards ASME A112.21.1M ASME Ratings are as follows:  
 LD - Safe Live Load under 2000 lbs. (0-900 kg)  
 The above categories are given as a guide only.  
 Please consult factory.

### NOTICE

The information contained herein is not intended to replace the full product installation and safety information available or the experience of a trained product installer. You are required to thoroughly read all installation instructions and product safety information before beginning the installation of this product.



**Typical Installation**

Watts product specifications in U.S. customary units and metric are approximate and are provided for reference only. For precise measurements, please contact Watts Technical Service. Watts reserves the right to change or modify product design, construction, specifications, or materials without prior notice and without incurring any obligation to make such changes and modifications on Watts products previously or subsequently sold.

