

For Water Heater/Tank Applications

Job Name _____

Contractor _____

Job Location _____

Approval _____

Engineer _____

Contractor's P.O. No. _____

Approval _____

Representative _____

LEAD FREE*

Model LFN360 and LFN360I Vacuum Relief Valves

Sizes: 1/2" and 3/4" (15 and 20mm) Male NPT & 3/4" MNPT x 3/4" FNPT

For automatic venting of a closed system to atmosphere when a vacuum is created. The Watts LFN360 Vacuum Relief Valve permits air to enter and prevent vacuum conditions that could siphon the water from the system, resulting in collapse of a tank or water heater or equipment burn out.

Features

- Low profile
- All Lead Free* brass body
- Can be mounted in a vertical or horizontal position
- Suitable for low pressure steam and water service
- Tested and rated to ANSI Z21.22
- CSA certified

Applications

- Domestic water heaters and supply tanks
- Table top heaters
- Jacketed steam kettles
- Unit heaters
- Low pressure steam systems
- Steam coil heaters

Note: Vacuum relief valves are not designed or approved as back-siphonage backflow preventers. For protection against back-siphonage install Watts Series 288A vacuum breakers.

Specifications

Watts Models LFN360 and LFN360I Vacuum Relief Valves shall be installed on domestic hot water supply tanks/ heaters/ unit heaters/ steam kettles as indicated on plans. The vacuum relief valve shall be ANSI Z21.22 rated and CSA certified. The vacuum relief valve shall have an all Lead Free* brass body with an integral protective cover. The valve shall be mounted in a vertical or horizontal position. This device shall be constructed using Lead Free* brass material. Lead Free* vacuum relief valves shall comply with states codes and standards where applicable, requiring reduced lead content. The valve shall be a Watts Model LFN360 and LFN360I.

Tested and rated under "ANSI Z21.22 Relief Valves for Hot Water Supply Systems".



LFN360



LFN360I

Design certified by



Pressure — Temperature

Maximum steam working pressure: 15 psi (1.03 bar)

Maximum temperature: 250°F (121°C)

Standards

Tested and rated to ANSI Z21.22

CSA certified

Capacity

| SIZE (DN) | | Model | Venting CFM | Capacity LPM |
|-----------|----|------------|-------------|--------------|
| 1/2 | 15 | N360/N360I | 15 | 425 |
| 3/4 | 20 | N360/N360I | 15 | 425 |

*The wetted surface of this product contacted by consumable water contains less than 0.25% of lead by weight.

Watts product specifications in U.S. customary units and metric are approximate and are provided for reference only. For precise measurements, please contact Watts Technical Service. Watts reserves the right to change or modify product design, construction, specifications, or materials without prior notice and without incurring any obligation to make such changes and modifications on Watts products previously or subsequently sold.

Typical Installations

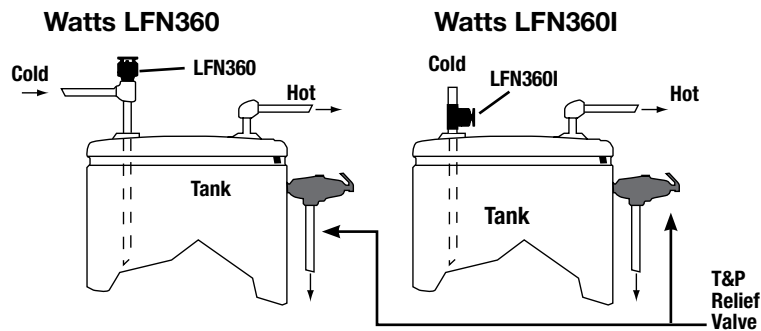


Figure 1
Domestic Hot Water Supply Tanks and Heaters with Top Supply

Water Service

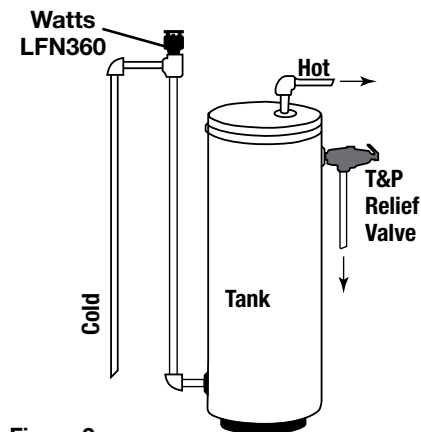


Figure 2
Domestic Hot Water Supply Tanks and Heaters with Bottom Feed

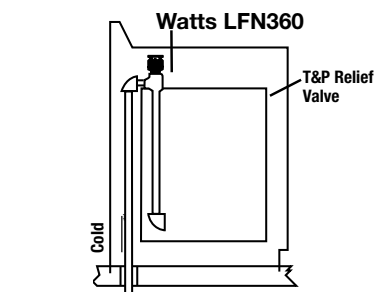


Figure 3
Table Top Heaters

Steam Service

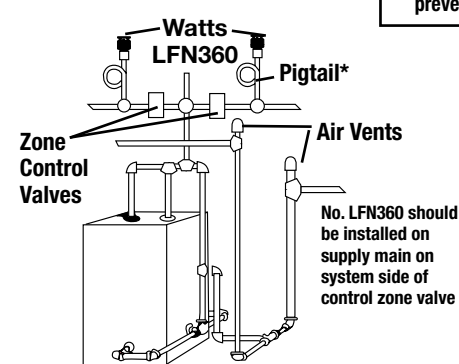


Figure 4
Low Pressure Steam Heating Systems

*Note: When used for steam service, be sure to use pigtail to prevent live steam from damaging LFN360, LFN360I valve.

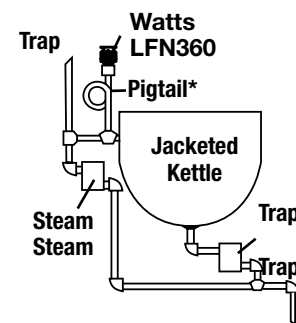


Figure 5
Jacketed Kettles

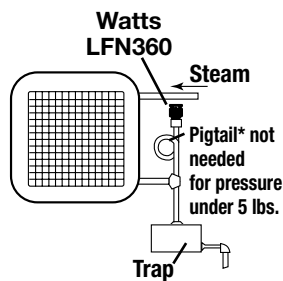


Figure 6
Unit Heaters

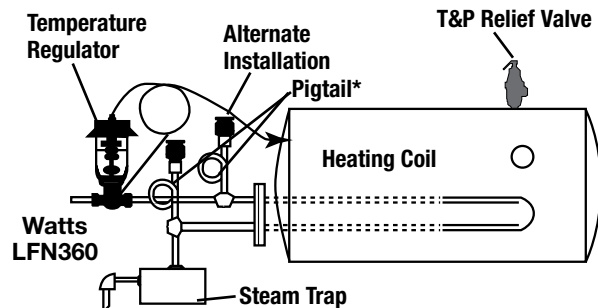
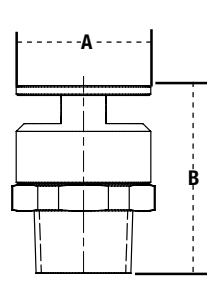


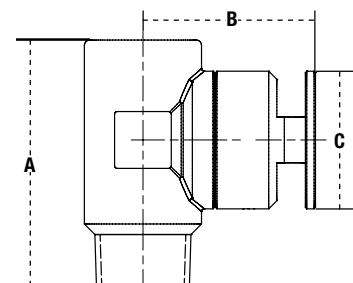
Figure 7
Steam Coil Heaters

Dimensions — Weight

| MODEL | SIZE (DN) | | DIMENSIONS | | | WEIGHT | | | | |
|---------|-----------|----|------------|---------|----------|--------|-------|-----|----|-----|
| | in. | mm | A in. | B mm | C in. | mm | oz. | gr. | | |
| LFN360 | 1/2 | 15 | 1 1/2 | 38 | 2 5/16 | 58 | — | — | 9 | 255 |
| LFN360 | 3/4 | 20 | 1 1/2 | 38 | 2 3/16 | 55 | — | — | 9 | 255 |
| LFN360I | 3/4 | 20 | 2 3/4 | 70 | 1 7/8 | 48 | 1 1/2 | 38 | 13 | 369 |



LFN360



LFN360I



A Watts Water Technologies Company



ISO 9001-2008
CERTIFIED

USA: Tel: (978) 688-1811 • Fax: (978) 794-1848 • www.watts.com
Canada: Tel: (905) 332-4090 • Fax: (905) 332-7068 • www.watts.ca